



Graduate
Students'
Association

2
0
2
2



2
0
2
3

STUDENT SERVICE CENTRE

The Student Service Centre is your resource on campus to easily access information, advice and services you need to navigate your university journey.

ACADEMIC SUCCESS



Support with specific subjects and general academic skills in various formats.

CAREER DEVELOPMENT



Help in developing the skills, knowledge, experiences and connections you need to manage your career.

FINANCIAL SUPPORT



Help with paying for your degree, including scholarships, awards and financial supports.

HEALTH & WELLNESS



Access to campus wellness resources to support your mental and physical health.

RECORDS & TRANSCRIPTS



Steps for ordering transcripts, verification documents and updating personal information.

COURSES & ENROLMENT



Registration how-to, list of important dates and deadlines, and advice on program options.

Our services are open to every student.
We want to get to know you and help you reach your goals.



UNIVERSITY
OF ALBERTA

uab.ca/ask



Welcome to the U of A!

As a member of the Graduate Students' Association (GSA), you have access to a number of services and benefits that the GSA offers:

- [GSA Health and Dental Plan](#)
- [Graduate Student Assistance Program](#)
- [GSA grants, bursaries, and awards](#)
- [Advice](#) about the GSA negotiated Collective Agreement for academically-employed graduate students
- Group rates from our recommended provider [TDIMM Home and Auto Insurance](#)
- [Kids & Company Child Care](#)
- [U-Pass](#) and
- [Advocacy and advising.](#)

The GSA provides the following funding opportunities for members:

- [Academic Travel Grants](#)
- [Child Care Grants](#)
- [Graduate Student Group Grants](#)
- [Emergency Bursaries](#) and
- [Recognition Awards.](#)

Contact Information

gsa.frontdesk@ualberta.ca

780.492.2175

The GSA office is located on the first floor of Triffo Hall. Email us at gsa.frontdesk@ualberta.ca or access our website to visit our virtual front desk.

uab.ca/gsa



Mental Health Resources

Mental Health Quick Resources Guide

Do you need help or support? Use these on and off-campus resources:

Website: www.ualberta.ca/current-students/need-help-now

Graduate Student Assistance Program (GSAP)

Offered through Homewood Health, this program can connect GSA members to counselling and advice on a broad range of issues, including managing anxiety and depression, controlling substance use, resolving family conflict, and a variety of other psychological and wellness issues.

For information: www.ualberta.ca/graduate-students-association/services/graduate-student-assistance-program

To access GSAP services, contact Homewood Health 24 hours a day, 7 days a week, 365 days a year:

Client Service: 780.428.7587

Website: www.homewoodhealth.com

Counselling & Clinical Services

Counselling & Clinical Services offers free, short-term, confidential psychology services. GSA members interested in counselling should call 780.492.5205.

Website: www.ualberta.ca/current-students/counselling

Wellness Supports

The Office of the Dean of Students oversees a Wellness Supports Team providing training, initiatives, supports, and facilitated peer connections, among other wellness resources.

Website: uab.ca/wellness

Social Worker Support

The Community Social Work Team has registered social workers to provide individual supportive case management on a one-by-one basis. They also work with students to strengthen mental health and wellness, bridge services gaps, and assist with on and off-campus resources.

Phone: 780.492.1619

Website: www.ualberta.ca/current-students/wellness-supports/individual-support/social-worker-support

GSA President,
Anas Fassih



GSA Vice-President
Academic, Bishoi Aziz



GSA Vice-President External,
Janmejay Rao



GSA Vice-President Labour,
Hiren Kaklotar



GSA Vice-President Student
Services, Monisha Vinod

On behalf of the executive team, welcome to the University of Alberta and to our Graduate Students' Association!

The GSA advocates on behalf of all UAlberta graduate students in pursuit of a supportive, respectful, and inclusive community that promotes the multi-faceted roles played by graduate students. We provide many benefits and services to our members for the betterment of their educational experience; you can find details on these programs in this planner. We are committed to supporting our members throughout their time at the University and, should you require assistance during your tenure, we encourage you to get in touch.

Our association also comprises the union for academically-employed graduate students, working to advance and protect their rights as essential workers of the university. If you hold a Graduate Teaching Assistantship, Graduate Research Assistantship, or Graduate Research Assistant Fellowship, then you are a unionized worker who benefits from contractual and legal protections. I would encourage you to review the Collective Agreement and stay up-to-date on the bargaining process, as engaged membership is key to a successful union.

I wish you all a year of success in your academic pursuits and beyond, despite these uncertain times.

With kind regards,

A handwritten signature in black ink, appearing to read 'Anas'.

Anas Fassih, GSA President 2022-2023

GSA Contacts

2022-2023 Directly-Elected Officers

Anas Fassih	President	gsa.president@ualberta.ca
Bishoi Aziz	Vice-President Academic	gsa.vpacademic@ualberta.ca
Janmejay Rao	Vice-President External	gsa.vpexternal@ualberta.ca
Hiren Kaklotar	Vice-President Labour	gsa.vplabour@ualberta.ca
Monisha Vinod	Vice-President Student Services	gsa.vpstudentservices@ualberta.ca

2022-2023 Council-Elected Officers

Dweej Shah	Speaker	gsa.speaker@ualberta.ca
Sophie Shi	Chief Returning Officer	gsa.elections@ualberta.ca
Md Habibur Rahaman	Senator	gsa.senator@ualberta.ca

Administrative/Professional Staff

Courtney Thomas, PhD	Executive Director	gsaed@ualberta.ca
Erika Heiberg, MA	Associate Director	gsaad@ualberta.ca



What is the GSA?

The GSA is a corporation established under the province's [Post-Secondary Learning Act \(PSLA\)](#) as the official representative body for more than 8,200 graduate students at the University of Alberta. The GSA has representatives on the Board of Governors, the General Faculties Council and all its committees, the Faculty of Graduate Studies and Research Council, the Senate, and the Alumni Council.

The GSA's graduate student leaders advocate on important issues that improve your graduate school experience. Visit the GSA website to learn more about this work and how it benefits you.

As a stand-alone entity, the GSA is governed by a Council, led by an elected executive team, and run by a professional staff reporting regularly to GSA Council. The GSA has its own lawyers, auditor, chartered accountant, and professional staff, and administers over \$950,000 in grants, bursaries, and awards annually. In addition to providing many services to GSA members, the GSA is a founding member of the Campus Food Bank and also negotiates an agreement regarding academically-employed graduate students with the Board of Governors of the University of Alberta.



Membership, Rights, and Privileges of GSA Members

All full- and part-time registered graduate students while they are registered (where applicable) at the University of Alberta after being admitted to the Faculty of Graduate Studies and Research are considered members of the GSA. As a GSA member, you can:

- ◆ Access GSA services
- ◆ Vote in all GSA elections and referenda *and*
- ◆ Seek nomination to any of the GSA's representative positions.

GSA General Election

Every year, the GSA holds a general election for the executive positions of:

- ◆ President
- ◆ Four Vice-Presidents *and*
- ◆ Ten Councillors-at-Large.

You can help shape the student experience and gain valuable experience by running for elected office (certain positions receive a stipend). Watch the GSA newsletter for information about the GSA's Discover Governance program, designed to help guide graduate students interested in governance.



For more information visit uab.ca/gsa

What is the GSA?

GSA Governance and GSA Council

Under the *PSLA*, responsibility for the governance of the GSA is in the hands of GSA Council. The GSA Council is comprised of:

- ♦ Elected GSA executives (President and four Vice-Presidents)
- ♦ Council-Elected members
- ♦ One representative from each department, faculty, or extra departmental unit at the University that offers a graduate program *and*
- ♦ Ten Councillors-at-Large.

All GSA members may attend open session meetings of GSA Council as observers. Members may be nominated for a seat on GSA Council through their departments, or as a Councillor-at-Large during the GSA General Election. For a seat on any GSA committee or University committee with GSA representation, members may seek election through the GSA Nominating Committee; opportunities are advertised regularly through the GSA newsletter.

GSA Council has delegated a number of responsibilities to the:

- ♦ GSA Board (the senior administrative authority of the GSA and the

discussion forum for the GSA executive team and Directors)

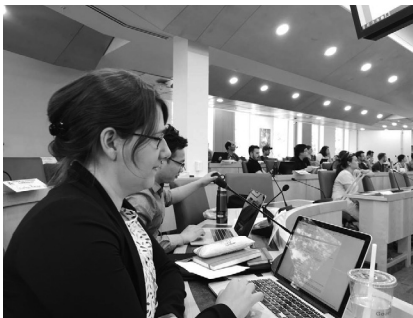
- ♦ GSA Council's standing committees (responsible for advising and recommending to GSA Council on policy and/or other specific tasks) *and*
- ♦ GSA executive team.

GSA Council meets monthly throughout the year. The meeting schedule, all materials, and minutes of past meetings can be found on the GSA website.

GSA Committees

The work of the GSA is supported by the efforts of nine standing committees that advise GSA Council on matters and policies relevant to their mandates, and have authority to take actions set out within those mandates (*GSA Bylaw and Policy, Section F: GSA Standing Committees*).

For more information on any of these committees, or if you are interested in getting involved in a committee, please contact the Elections Coordinator at gsa.nomcomm@ualberta.ca. The GSA Nominating Committee frequently communicates opportunities to serve on various committees via the GSA newsletter, and through the GSA website and other GSA social media platforms.



Labour Advocacy

Labour Advocacy and Advice

Under Section 58.4(1)(c) of the Labour Relations Code, the GSA is “the bargaining agent for academically-employed graduate students” and is to act with “exclusive authority” in representing graduate students in negotiating the Graduate Student Assistantship Collective Agreement (CA). The process is outlined in GSA Bylaw and Policy, Section Q: Collective Bargaining.

The CA is a legally binding agreement between the GSA and the University Board of Governors that contains

the regulations governing graduate students who are academically-employed as Graduate Teaching Assistants (GTAs), including Principal Instructors (PIs), Graduate Research Assistants (GRAs), and graduate students with a Graduate Research Assistant Fellowships (GRAFs).

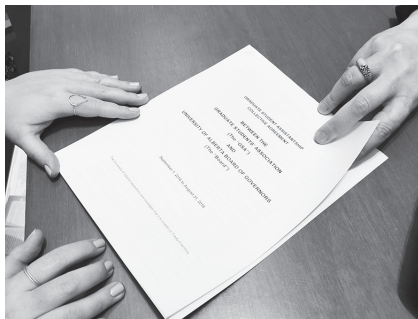
To learn about the CA, you can consult the full document on our website. The CA provides content requirements for Letters of Appointment, outlines minimum stipend rates, describes leaves and benefits, outlines expectations for graduate assistant and assistantship supervisor meetings and safe work environments, and stipulates a dispute resolution process for academically-employed graduate students. The GSA also regularly communicates through emails to

academically-employed graduate students.

You are encouraged to approach the GSA

for assistance if you have any questions or concerns related to your contract or employment under the CA. Call the GSA office at 780.492.2175, contact the Vice-President Labour at gsa.vplabour@ualberta.ca, or Associate Director, Erika Heiberg, at gsaad@ualberta.ca.

*As your union, we
champion, advance, and
protect your rights as
workers*



For more information visit uab.ca/gsa

GSA Services

Graduate Student Assistance Program (GSAP)

All GSA members are able to access the GSAP provided by Homewood Health. Homewood Health adopts a holistic approach to program delivery, with a belief that an assistance program must offer more than just psychological counselling, and must also appeal to graduate students who could benefit from other important health supporting services.

In addition to face-to-face services, Homewood Health offers telephonic and web-based services and e-learning opportunities. These services are accessible 24 hours a day, 7 days a week.

Please visit their website at www.homewoodhealth.com for more information.

New Homewood Pathfinder is an interactive tool to help personalize service based on your unique needs and preferences. You can find instructions on how to access this tool on the GSA GSAP webpage.

GSAP Services Include:

- ◆ Individual assessment and psychological counselling for a wide range of issues
- ◆ Provision of individual, couples, and family counselling
- ◆ Individual monitoring and post-therapy follow-up as appropriate
- ◆ Referral to community resources where appropriate
- ◆ Comprehensive work life services and programs (legal, financial, fitness, nutritional, childcare, and eldercare consultations)
- ◆ Career counselling
- ◆ Access to health promotion/wellness print and electronic resources *and*
- ◆ Crisis intervention, either work-related or personal.

All GSA members are eligible to use this program through the GSAP fee assessed to all graduate students. This is a mandatory program, established by a referendum passed by graduate students and there is no opt-out option. Partners and dependants of GSA members are also able to access GSAP services.





TD Insurance Meloche Monnex Affinity Partnership for Home and Automobile Insurance

The GSA has negotiated a group rate with TD Insurance Meloche Monnex to provide GSA members with preferred automobile and home insurance.

You may contact them either by phone at 1.800.339.1847 or through their website at www.tdinsurance.com/affinity/ualbertagsa to obtain a quote. Please identify yourself as a GSA member to receive a preferred-rate quote. You may be asked to provide proof of your registration as a graduate student at the U of A.

You may obtain enrollment verification through Bear Tracks for submission to TD Insurance Meloche Monnex.



GSA Recognition Awards

GSA Awards Night is held annually in the spring to recognize GSA members, their supporters, and graduate student groups for their achievements and contributions to the University community. Award categories range from graduate student teaching and research to community service and outreach. Funding for the GSA Recognition Awards is provided by external sponsors and the Graduate Student Support Fund (GSSF), which is part of negotiated funding the GSA receives from the University to support and recognize its members.

More information and nomination forms are available on the GSA website once the competition opens and information is sent to GSA members through the GSA newsletter.



For more information visit uab.ca/gsa

GSA Services

Funding

GSA funding opportunities include:

- ♦ **Academic Travel Grants:** provided to GSA members through the GSSF to help offset the cost of participation in academic activities such as conferences and research trips that are directly related to their current academic programs.
- ♦ **Child Care Grants:** provided through the GSSF to help offset the cost of child care for GSA members.
- ♦ **Graduate Student Group Grants:** provided by the GSA to offset the cost of the academic activities of graduate student groups, such as seminars, guest lecturers, or colloquia.
- ♦ **Emergency Bursaries:** provided through the GSSF, a non-repayable bursary for GSA members who need assistance due to an unanticipated emergency.

Current policies, information, and online application forms can be found on our website. Questions about GSA funding opportunities should be directed to gsa.grants@ualberta.ca.

Campus Food Bank

Email: foodbank@ualberta.ca
Website: campusfoodbank.com

Established by the GSA in 1991, the Campus Food Bank was the first of its kind in Canadian universities. Now a joint service, proudly sponsored by the Graduate Students' Association and the Students' Union, it is just one of an estimated 50 campus food banks across Canada.

The Campus Food Bank distributes emergency food hampers and toiletries to all members of the University community — students (graduate and undergraduate), staff (academic and non-academic), alumni, and their families. It also provides referrals to other services that may be of use to their clients. Please support the Campus Food Bank with a donation of food, toiletries, money, or time. If you are in need, please do not hesitate to use their confidential services.



Universal Transit Pass (U-Pass)

The Universal Transit Pass (U-Pass) is an initiative of the University's student associations, local transit authorities, and the University of Alberta to deliver affordable and sustainable transit service to the U of A.

What is the U-Pass?

The U-Pass is a transit pass program that permits currently enrolled graduate students at the U of A unlimited access to regular Edmonton, St. Albert, Spruce Grove, Leduc, Fort Saskatchewan, Beaumont, and Strathcona County Transit systems during the Fall (September – December), Winter (January – April) and Spring/Summer (May – August) terms. The U-Pass must be on the owner's person in proof of payment areas at all times.

Effective Fall 2021, the U-Pass moved from a sticker-based system attached to the ONEcard to an Arc Smart Fare Card. Please check the U-Pass website for more information and about distribution.

Course-based Masters students will not be automatically assessed the Spring/Summer U-Pass. If they choose to take courses in the spring or summer they will be assessed the fee

upon registration.

Thesis students must demonstrate that they are away for two or more months in a specific term to receive an exemption for the U-Pass assessment; this will require a letter from the students' supervisor confirming the time the student is out of the serviceable area.

How Does the U-Pass Program Work?

U-Pass is a transit fare program, which lowers the cost of transit for GSA members.

Each term GSA members pay a mandatory U-Pass fee, which is much lower than the cost of purchasing monthly passes for the same period because costs are spread over a large participant base.

The GSA executives continue to advocate to the city for affordable and flexible transit options for students and will update members via the GSA newsletter. You can also watch the U-Pass website for details.

For more information about the U-Pass visit: www.ualberta.ca/current-students/upass. For updated transit information and route changes, please visit ETS: <https://www.edmonton.ca/edmonton-transit-system-ets>



For more information visit uab.ca/gsa

GSA Health & Dental Plan



Make the most out of it

A Health & Dental Plan designed to meet your needs!



Health



Dental



Vision



Travel

For complete details on coverage, the Plan, eligibility, and group numbers, visit www.studentcare.ca.

Save more money!



By consulting a Studentcare Network professional, you can get additional coverage.

* Please note that at the time of printing, benefits and dates for 2022-2023 were still subject to change. For complete details, visit www.studentcare.ca.



Questions?
www.studentcare.ca

Scan the QR code for more details on your Plan.



GSA Health & Dental Plan



Make the most out of it

Save Money with the Studentcare Networks

By consulting a Network professional, you'll get additional coverage on services like:

- Dental
- Vision
- Physiotherapy
- Psychology
- Chiropractic
- And more...



For complete details on coverage, the Plan, eligibility, and group numbers, visit www.studentcare.ca.

* Please note that at the time of printing, benefits and dates for 2022-2023 were still subject to change. For complete details, visit www.studentcare.ca.



Questions?
www.studentcare.ca

Scan the QR code for more details on your Plan.



International

University of Alberta International

University of Alberta International is committed to helping students adjust to life in Canada, and to provide a supportive environment while studying at UAlberta.

The International Student Services team — at the International Services Centre — provides services, events, and programming that help students accomplish their academic and personal goals. This team of international experts is ready to coach students towards a successful university experience.

The International Services Centre (142 Telus Centre, 87 Ave and 111 St) is the place to visit for personal one-on-one advising.

Advisors can answer questions on a variety of issues including study permits and visas, financial support, health care, and more. They also offer support and strategies for coping with homesickness, adjusting to a new culture, building a community of friends, and relating to others.

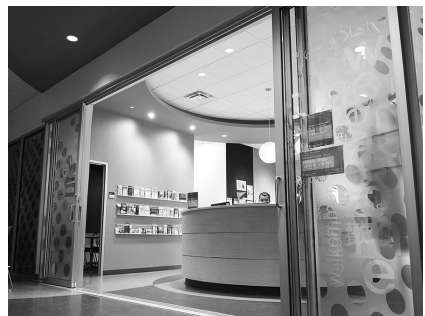
Visit the UAI website for more information:
<https://www.ualberta.ca/international>

International Student Services Resources:

- ♦ Health Insurance for International Students: <https://bit.ly/3HkdpqM>
- ♦ Social Insurance Number (SIN): <https://bit.ly/3tte9ug>
- ♦ Work in Canada: <https://bit.ly/39nt16n>
- ♦ Advice About Scams: <https://bit.ly/3Hebryh>
- ♦ Canada's Social Customs: <https://bit.ly/3xF6g7p>
- ♦ Cultural Competency: <https://bit.ly/3zxtv1c>
- ♦ Indigenous Heritage: <https://bit.ly/39eVY18>
- ♦ Health and Wellness: <https://bit.ly/3HeXRKV>
- ♦ Money: <https://bit.ly/3aV7fal>
- ♦ Renter's Rights and Responsibilities: <https://bit.ly/3MG4pnb>

International Student Services programs include:

- ♦ English Conversation Club – Improve your English speaking skills. Join this informal club to engage in English conversations. The club meets every Friday afternoon.
- ♦ English Reading Club – improve your English reading skills. You must commit to a 6-week session. Monday afternoons. Check the UAI website for the next session!



U of A Services

Dean of Students - Portfolio of Student Services

5-02 SUB | 780-492-4145 | dosdean@ualberta.ca | uab.ca/dos

Academic Success Centre

1-80 SUB | 780-492-2682 | success@ualberta.ca | uab.ca/success

Career Centre

2-100 SUB | 780-492-4291 | yourcareercentre@ualberta.ca | uab.ca/cc

Counselling and Clinical Services

2-600 SUB | 780-492-5205 | uab.ca/CCS

Wellness Supports

780-492-6272 | doshelp@ualberta.ca | uab.ca/wellness

First Peoples' House

2-400 SUB | 780-492-5677 | fph@ualberta.ca | uab.ca/FPH

La Centrale - Pôle de Réussite et d'Excellence (Campus Saint-Jean)

Local 2-52 Pavillion McMahon | 780-465-8797 | lacentrale@ualberta.ca | lacentrale.csj.ualberta.ca

Military and Veteran Friendly Campus

mvfc.uofa@ualberta.ca | <https://www.ualberta.ca/current-students/veteran-friendly-campus/index.htm>

Office of the Student Ombuds

2-702 SUB | 780-492-4689 | ombuds@ualberta.ca | uab.ca/Ombuds

Residence Services

1-044 Lister Centre | 780-492-4242 | East Campus Residence | 780-492-3345 | housing@ualberta.ca | uab.ca/residence

Sexual Assault Centre

2-705 SUB | 780-492-9771 | sexualassaultcentre@ualberta.ca | uab.ca/SACentre

Student Conduct and Accountability

1-04 Triffo Hall | 780-492-0777 | studentconduct@ualberta.ca | uab.ca/conduct

Student Residence Office (Augustana Campus)

Room L2-104 Learning Commons | 780-679-1163 | studentservices@augustana.ca | ualberta.ca/augustana/student-life/residence

Student Service Centre

Administration (ADM) Building | 780-492-3113 or 1-855-492-3113 (toll-free) | uab.ca/ask

University Health Centre

2-200 SUB | 780-492-2612 | hws@ualberta.ca | uab.ca/UHC



For more information visit uab.ca/gsa

Message from the Dean of Students

To All University of Alberta Graduate Students,

Welcome to your academic journey. You are valued members of our university community as students, researchers, and teachers. I am glad that you have chosen to pursue your academic goals at the University of Alberta.

We are deeply committed to broadening participation in higher education and to creating a more diverse and inclusive scholarly community. Diversity of perspectives and opinions is crucial to the functioning of an academic community.

The skills you develop while at the U of A will forge and strengthen partnerships, create greater opportunities for you to make a difference, and lead you to experience and reflect critically.

Many resources are available to you during the course of your graduate education. To support your wellbeing, the Office of the Dean of Students is committed to providing you with the support and resources you need, when you need them. Get in touch with us. We look forward to hearing from you.

Dr. André Costopoulos

Vice-Provost and Dean of Students

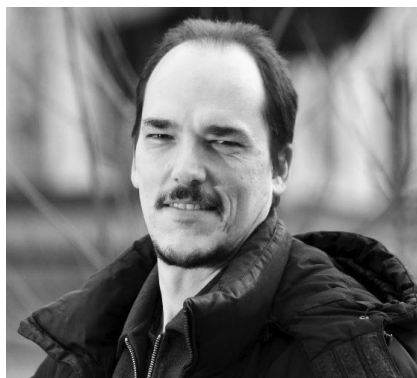


Photo: Owen Egan

Office of the Dean of Students

5-02 SUB | 780-492-4145

dosdean@ualberta.ca | uab.ca/dos

The Office of the Dean of Students supports all students in the pursuit of academic and personal success. We provide leadership on university policies and initiatives and collaborate with faculties, offices, and services across all U of A campuses to deliver effective programming that is accessible to all students.

Message from the Dean of FGSR

Welcome to the University of Alberta and the Faculty of Graduate Studies and Research (FGSR). We are home to more than 8200 graduate students studying in over 380 programs and 200 specializations. FGSR is also home to the Postdoctoral Fellows office, which supports an additional 820 scholars who make key contributions to the University of Alberta's teaching and research mission.

FGSR supports its graduate students by providing the highest quality service to ensure that they reach their full potential both as scholars and professionals. Our staff and team of Associate Deans are committed to partnering with the University's disciplinary faculties and departments to make every stage of your academic journey a success.

FGSR offers programs and supports to help you achieve your academic goals including thesis-writing boot camps, sessions on research ethics and intellectual property, scholarship writing seminars, awards and funding, and the Graduate Teaching and Learning (GTL) program.

FGSR is also focused on graduate student professional development, and through our Graduate Student Internship Program students can connect with enthusiastic employers within our local community and beyond while gaining valuable work experience.

If you need assistance navigating university regulations, if you want to access various resources on campus, or if you require information on registration, fees, scholarships, and special funding



opportunities, please contact us.

Everyone at FGSR works collectively to see you achieve positive, transformational experiences during your graduate school journey to emerge as a leader in your field of study. We encourage you to participate in the various wellness activities that are offered by the FGSR and the U of A throughout the year to maintain your health and well being while you pursue your studies.

I hope you make the most of all that FGSR and the UofA have to offer you and I wish you every success as you begin your academic journey.

Brooke Milne, PhD

Vice-Provost and Dean
Faculty of Graduate Studies and Research

Faculty of Graduate Studies and Research
5-02 SUB | 780-492-4145
uab.ca/gradstudies | grad.mail@ualberta.ca

For more information visit uab.ca/gsa

NOTES

Free Membership at the Club!

All U of A Staff, Alumni even Graduate Students can become members of the University Club.
Signing up for membership provides you with a 1 Year FREE Membership.

Why become a Member?

Many member benefits including:

- 10% Discount on Member Dining Purchases (member must be present)
- Exclusive Patio Reservations for Members only
- Members Only Social Events
- Free Parking during Lunch & Dinner Hours while attending the Club
- Preferred Member Pricing on Banquets
- Reciprocal Club Privileges





Graduate
Students'
Association

August

Sun	Mon	Tue	Wed	Thur	Fri	Sat
	1	2	3	4	5	6
7	8	9	10	11	12	13
14	15	16	17	18	19	20
21	22	23	24	25	26	27
28	29	30	31			

2022

NOTES

2022

Thursday

11

Friday

12

Saturday

13

Sunday

14

AUGUST						
S	M	T	W	T	F	S
		1	2	3	4	5 6
7	8	9	10	11	12	13
14	15	16	17	18	19	20
21	22	23	24	25	26	27
28	29	30	31			

August

Monday

15

GSA Council Meeting - 6 pm

Tuesday

16

Wednesday

17

2022

Thursday

18

Friday

19

Saturday

20

Sunday

21

AUGUST						
S	M	T	W	T	F	S
	1	2	3	4	5	6
7	8	9	10	11	12	13
14	15	16	17	18	19	20
21	22	23	24	25	26	27
28	29	30	31			

August

Monday

22

Tuesday

23

Wednesday

24

2022

Thursday

25

Friday

26

Saturday

27

Sunday

28

AUGUST						
S	M	T	W	T	F	S
		1	2	3	4	5
	6	7	8	9	10	11
	12	13	14	15	16	17
	18	19	20	21	22	23
	24	25	26	27		
	28	29	30	31		

September

Sun	Mon	Tue	Wed	Thur	Fri	Sat
				1	2	3
4	5	6	7	8	9	10
11	12	13	14	15	16	17
18	19	20	21	22	23	24
25	26	27	28	29	30	

2022

NOTES



**UNIVERSITY
OF ALBERTA**

ACADEMIC SUCCESS CENTRE

Helping Graduate Students Develop and Excel

Professional academic workshops and individual appointments for every step of your graduate studies, including:

- proposals, literature reviews, articles, and theses;
- time and exam management;
- orals, OSCEs, and presentations;
- and academic copy editing.

Visit: uab.ca/success

August/September

Monday

29

Tuesday

30

Wednesday

31

2022

Thursday

1

Friday

2

Saturday

3

Sunday

4

SEPTEMBER						
S	M	T	W	T	F	S
				1	2	3
4	5	6	7	8	9	10
11	12	13	14	15	16	17
18	19	20	21	22	23	24
25	26	27	28	29	30	

September

Monday

5

Labour Day - University Buildings Closed

Tuesday

6

Wednesday

7

2022

Thursday

8

Friday

9

Saturday

10

Sunday

11

SEPTEMBER						
S	M	T	W	T	F	S
				1	2	3
4	5	6	7	8	9	10
11	12	13	14	15	16	17
18	19	20	21	22	23	24
25	26	27	28	29	30	

September

Monday

12

Tuesday

13

Wednesday

14

2022

Thursday

15

Friday

16

Saturday

17

Sunday

18

SEPTEMBER						
S	M	T	W	T	F	S
				1	2	3
4	5	6	7	8	9	10
11	12	13	14	15	16	17
18	19	20	21	22	23	24
25	26	27	28	29	30	

September

Monday

19

GSA Council Meeting - 6 pm

Tuesday

20

Wednesday

21

2022

Thursday

22

Friday

23

Saturday

24

Sunday

25

SEPTEMBER						
S	M	T	W	T	F	S
				1	2	3
4	5	6	7	8	9	10
11	12	13	14	15	16	17
18	19	20	21	22	23	24
25	26	27	28	29	30	

October

Sun	Mon	Tue	Wed	Thur	Fri	Sat
						1
2	3	4	5	6	7	8
9	10	11	12	13	14	15
16	17	18	19	20	21	22
23	24	25	26	27	28	29
30	31					

2022

NOTES

NOTES

September/October

Monday

26

Tuesday

27

Wednesday

28

2022

Thursday

29

Friday

30

Saturday

1

Sunday

2

OCTOBER

S	M	T	W	T	F	S
						1
2	3	4	5	6	7	8
9	10	11	12	13	14	15
16	17	18	19	20	21	22
23	24	25	26	27	28	29
30	31					

October

Monday

3

Tuesday

4

Wednesday

5

2022

Thursday

6

Friday

7

Saturday

8

Sunday

9

OCTOBER						
S	M	T	W	T	F	S
						1
2	3	4	5	6	7	8
9	10	11	12	13	14	15
16	17	18	19	20	21	22
23	24	25	26	27	28	29
30	31					

October

Monday

10

Thanksgiving Day - University Buildings Closed

Tuesday

11

Wednesday

12

2022

Thursday

13

Friday

14

Saturday

15

Sunday

16

OCTOBER						
S	M	T	W	T	F	S
						1
2	3	4	5	6	7	8
9	10	11	12	13	14	15
16	17	18	19	20	21	22
23	24	25	26	27	28	29
30	31					

October

Monday

17

Tuesday

18

Wednesday

19

2022

Thursday

20

Friday

21

Saturday

22

Sunday

23

OCTOBER						
S	M	T	W	T	F	S
						1
2	3	4	5	6	7	8
9	10	11	12	13	14	15
16	17	18	19	20	21	22
23	24	25	26	27	28	29
30	31					

October

Monday

24

GSA Council Meeting - 6 pm

Tuesday

25

Wednesday

26

2022

Thursday

27

Friday

28

Saturday

29

Sunday

30

OCTOBER						
S	M	T	W	T	F	S
						1
2	3	4	5	6	7	8
9	10	11	12	13	14	15
16	17	18	19	20	21	22
23	24	25	26	27	28	29
30	31					

November

Sun	Mon	Tue	Wed	Thur	Fri	Sat
		1	2	3	4	5
6	7	8	9	10	11	12
13	14	15	16	17	18	19
20	21	22	23	24	25	26
27	28	29	30			

2022

NOTES

THE BLACK DOG FREEHOUSE



10425 WHYTE AVE

October/November

Monday

31

Tuesday

1

Wednesday

2

2022

Thursday

3

Friday

4

Saturday

5

Sunday

6

NOVEMBER						
S	M	T	W	T	F	S
		1	2	3	4	5
6	7	8	9	10	11	12
13	14	15	16	17	18	19
20	21	22	23	24	25	26
27	28	29	30			

November

Monday

7

Fall Term Reading Week

Tuesday

8

Fall Term Reading Week

Wednesday

9

Fall Term Reading Week

2022

Fall Term Reading Week

Thursday
10

Remembrance Day - University Buildings Closed

Friday
11

Saturday
12

Sunday
13

NOVEMBER						
S	M	T	W	T	F	S
		1	2	3	4	5
6	7	8	9	10	11	12
13	14	15	16	17	18	19
20	21	22	23	24	25	26
27	28	29	30			

November

Monday

14

Tuesday

15

Wednesday

16

2022

Thursday

17

Friday

18

Saturday

19

Sunday

20

NOVEMBER						
S	M	T	W	T	F	S
		1	2	3	4	5
6	7	8	9	10	11	12
13	14	15	16	17	18	19
20	21	22	23	24	25	26
27	28	29	30			

November

Monday

21

GSA Council Meeting - 6 pm

Tuesday

22

Wednesday

23

2022

Thursday

24

Friday

25

Saturday

26

Sunday

27

NOVEMBER						
S	M	T	W	T	F	S
		1	2	3	4	5
6	7	8	9	10	11	12
13	14	15	16	17	18	19
20	21	22	23	24	25	26
27	28	29	30			

December

Sun	Mon	Tue	Wed	Thur	Fri	Sat
				1	2	3
4	5	6	7	8	9	10
11	12	13	14	15	16	17
18	19	20	21	22	23	24
25	26	27	28	29	30	31

2022

NOTES

NOTES

November/December

Monday

28

Tuesday

29

Wednesday

30

2022

Thursday

1

Friday

2

Saturday

3

Sunday

4

DECEMBER						
S	M	T	W	T	F	S
				1	2	3
4	5	6	7	8	9	10
11	12	13	14	15	16	17
18	19	20	21	22	23	24
25	26	27	28	29	30	31

December

Monday

5

Tuesday

6

Wednesday

7

2022

Thursday

8

Friday

9

Saturday

10

Sunday

11

DECEMBER						
S	M	T	W	T	F	S
				1	2	3
4	5	6	7	8	9	10
11	12	13	14	15	16	17
18	19	20	21	22	23	24
25	26	27	28	29	30	31

December

Monday

12

GSA Council Meeting - 6 pm

Tuesday

13

Wednesday

14

2022

Thursday

15

Friday

16

Saturday

17

Sunday

18

DECEMBER						
S	M	T	W	T	F	S
				1	2	3
4	5	6	7	8	9	10
11	12	13	14	15	16	17
18	19	20	21	22	23	24
25	26	27	28	29	30	31

December

Monday

19

Tuesday

20

Wednesday

21

2022

Thursday

22

Friday

23

Saturday

24

Sunday

25

Christmas Holiday Period -
University Buildings Closed

DECEMBER						
S	M	T	W	T	F	S
				1	2	3
4	5	6	7	8	9	10
11	12	13	14	15	16	17
18	19	20	21	22	23	24
25	26	27	28	29	30	31

January

Sun	Mon	Tue	Wed	Thur	Fri	Sat
1	2	3	4	5	6	7
8	9	10	11	12	13	14
15	16	17	18	19	20	21
22	23	24	25	26	27	28
29	30	31				

2023

NOTES

December/January

Monday

26

Christmas Holiday Period - University Buildings Closed

Tuesday

27

Christmas Holiday Period - University Buildings Closed

Wednesday

28

Christmas Holiday Period - University Buildings Closed

2023

Christmas Holiday Period - University Buildings Closed

Thursday
29

Christmas Holiday Period - University Buildings Closed

Friday
30

Saturday
31

Christmas Holiday Period -
University Buildings Closed

Sunday
1

New Year's Day -
University Buildings Closed

JANUARY						
S	M	T	W	T	F	S
1	2	3	4	5	6	7
8	9	10	11	12	13	14
15	16	17	18	19	20	21
22	23	24	25	26	27	28
29	30	31				

January

Monday

2

New Year's Day in lieu -
University Buildings Closed

Tuesday

3

Wednesday

4

2023

Thursday

5

Friday

6

Saturday

7

Sunday

8

JANUARY						
S	M	T	W	T	F	S
1	2	3	4	5	6	7
8	9	10	11	12	13	14
15	16	17	18	19	20	21
22	23	24	25	26	27	28
29	30	31				

January

Monday

9

Tuesday

10

Wednesday

11

2023

Thursday

12

Friday

13

Saturday

14

Sunday

15

JANUARY						
S	M	T	W	T	F	S
1	2	3	4	5	6	7
8	9	10	11	12	13	14
15	16	17	18	19	20	21
22	23	24	25	26	27	28
29	30	31				

January

Monday

16

Tuesday

17

Wednesday

18

2023

Thursday

19

Friday

20

Saturday

21

Sunday

22

JANUARY						
S	M	T	W	T	F	S
1	2	3	4	5	6	7
8	9	10	11	12	13	14
15	16	17	18	19	20	21
22	23	24	25	26	27	28
29	30	31				

January

Monday
23

GSA Council Meeting - 6 pm

Tuesday
24

Wednesday
25

2023

Thursday

26

Friday

27

Saturday

28

Sunday

29

JANUARY						
S	M	T	W	T	F	S
1	2	3	4	5	6	7
8	9	10	11	12	13	14
15	16	17	18	19	20	21
22	23	24	25	26	27	28
29	30	31				

February

Sun	Mon	Tue	Wed	Thur	Fri	Sat
			1	2	3	4
5	6	7	8	9	10	11
12	13	14	15	16	17	18
19	20	21	22	23	24	25
26	27	28				

2023

January/February

Monday

30

Tuesday

31

Wednesday

1

2023

Thursday

2

Friday

3

Saturday

4

Sunday

5

FEBRUARY						
S	M	T	W	T	F	S
		1	2	3	4	
5	6	7	8	9	10	11
12	13	14	15	16	17	18
19	20	21	22	23	24	25
26	27	28				

February

Monday

6

Tuesday

7

Wednesday

8

2023

Thursday

9

Friday

10

Saturday

11

Sunday

12

FEBRUARY						
S	M	T	W	T	F	S
		1	2	3	4	
5	6	7	8	9	10	11
12	13	14	15	16	17	18
19	20	21	22	23	24	25
26	27	28				

February

Monday

13

Tuesday

14

Wednesday

15

2023

Thursday

16

Friday

17

Saturday

18

Sunday

19

FEBRUARY						
S	M	T	W	T	F	S
		1	2	3	4	
5	6	7	8	9	10	11
12	13	14	15	16	17	18
19	20	21	22	23	24	25
26	27	28				

February

Monday

20

Family Day - University Buildings Closed

Tuesday

21

Winter Term Reading Week

Wednesday

22

Winter Term Reading Week

2023

Winter Term Reading Week

Thursday
23

Winter Term Reading Week

Friday
24

Saturday
25

Sunday
26

FEBRUARY						
S	M	T	W	T	F	S
		1	2	3	4	
5	6	7	8	9	10	11
12	13	14	15	16	17	18
19	20	21	22	23	24	25
26	27	28				

March

Sun	Mon	Tue	Wed	Thur	Fri	Sat
			1	2	3	4
5	6	7	8	9	10	11
12	13	14	15	16	17	18
19	20	21	22	23	24	25
26	27	28	29	30	31	

2023

NOTES

February/March

Monday

27

GSA Council Meeting - 6 pm

Tuesday

28

Wednesday

1

2023

Thursday

2

Friday

3

Saturday

4

Sunday

5

MARCH						
S	M	T	W	T	F	S
		1	2	3	4	
5	6	7	8	9	10	11
12	13	14	15	16	17	18
19	20	21	22	23	24	25
26	27	28	29	30	31	

March

Monday

6

Tuesday

7

Wednesday

8

2023

Thursday

9

Friday

10

Saturday

11

Sunday

12

MARCH						
S	M	T	W	T	F	S
		1	2	3	4	
5	6	7	8	9	10	11
12	13	14	15	16	17	18
19	20	21	22	23	24	25
26	27	28	29	30	31	

March

Monday

13

Tuesday

14

Wednesday

15

2023

Thursday

16

Friday

17

Saturday

18

Sunday

19

MARCH						
S	M	T	W	T	F	S
		1	2	3	4	
5	6	7	8	9	10	11
12	13	14	15	16	17	18
19	20	21	22	23	24	25
26	27	28	29	30	31	

March

Monday

20

GSA Council Meeting - 6 pm

Tuesday

21

Wednesday

22

2023

Thursday

23

Friday

24

Saturday

25

Sunday

26

MARCH						
S	M	T	W	T	F	S
		1	2	3	4	
5	6	7	8	9	10	11
12	13	14	15	16	17	18
19	20	21	22	23	24	25
26	27	28	29	30	31	

April

Sun	Mon	Tue	Wed	Thur	Fri	Sat
						1
2	3	4	5	6	7	8
9	10	11	12	13	14	15
16	17	18	19	20	21	22
23	24	25	26	27	28	29
30						

2023

NOTES

March/April

Monday

27

Tuesday

28

Wednesday

29

2023

Thursday

30

Friday

31

Saturday

1

Sunday

2

APRIL						
S	M	T	W	T	F	S
						1
2	3	4	5	6	7	8
9	10	11	12	13	14	15
16	17	18	19	20	21	22
23	24	25	26	27	28	29
						30

April

Monday

3

Tuesday

4

Wednesday

5

2023

Thursday

6

Good Friday - University Buildings Closed

Friday

7

Saturday

8

Sunday

9

Easter Sunday -
University Buildings
Closed

APRIL

S	M	T	W	T	F	S
						1
2	3	4	5	6	7	8
9	10	11	12	13	14	15
16	17	18	19	20	21	22
23	24	25	26	27	28	29
						30

April

Monday

10

Easter Monday - University Buildings Closed

Tuesday

11

Wednesday

12

2023

Thursday

13

Friday

14

Saturday

15

Sunday

16

APRIL						
S	M	T	W	T	F	S
						1
2	3	4	5	6	7	8
9	10	11	12	13	14	15
16	17	18	19	20	21	22
23	24	25	26	27	28	29
						30

April

Monday

17

GSA Council Meeting - 6 pm

Tuesday

18

Wednesday

19

2023

Thursday

20

Friday

21

Saturday

22

Sunday

23

APRIL						
S	M	T	W	T	F	S
						1
2	3	4	5	6	7	8
9	10	11	12	13	14	15
16	17	18	19	20	21	22
23	24	25	26	27	28	29
						30

April

Monday

24

Tuesday

25

Wednesday

26

2023

Thursday

27

Friday

28

Saturday

29

Sunday

30

APRIL						
S	M	T	W	T	F	S
						1
2	3	4	5	6	7	8
9	10	11	12	13	14	15
16	17	18	19	20	21	22
23	24	25	26	27	28	29
30						

May

Sun	Mon	Tue	Wed	Thur	Fri	Sat
	1	2	3	4	5	6
7	8	9	10	11	12	13
14	15	16	17	18	19	20
21	22	23	24	25	26	27
28	29	30	31			

2023

NOTES

May

Monday

1

Tuesday

2

Wednesday

3

2023

Thursday

4

Friday

5

Saturday

6

Sunday

7

MAY						
S	M	T	W	T	F	S
	1	2	3	4	5	6
7	8	9	10	11	12	13
14	15	16	17	18	19	20
21	22	23	24	25	26	27
28	29	30	31			

May

Monday

8

Tuesday

9

Wednesday

10

2023

Thursday

11

Friday

12

Saturday

13

Sunday

14

MAY						
S	M	T	W	T	F	S
	1	2	3	4	5	6
7	8	9	10	11	12	13
14	15	16	17	18	19	20
21	22	23	24	25	26	27
28	29	30	31			

May

Monday

15

GSA Council Meeting - 6 PM

Tuesday

16

Wednesday

17

2023

Thursday

18

Friday

19

Saturday

20

Sunday

21

MAY						
S	M	T	W	T	F	S
	1	2	3	4	5	6
7	8	9	10	11	12	13
14	15	16	17	18	19	20
21	22	23	24	25	26	27
28	29	30	31			

May

Monday

22

Victoria Day - University Buildings Closed

Tuesday

23

Wednesday

24

2023

Thursday

25

Friday

26

Saturday

27

Sunday

28

MAY						
S	M	T	W	T	F	S
	1	2	3	4	5	6
7	8	9	10	11	12	13
14	15	16	17	18	19	20
21	22	23	24	25	26	27
28	29	30	31			

June

Sun	Mon	Tue	Wed	Thur	Fri	Sat
				1	2	3
4	5	6	7	8	9	10
11	12	13	14	15	16	17
18	19	20	21	22	23	24
25	26	27	28	29	30	

2023

May/June

Monday

29

Tuesday

30

Wednesday

31

2023

Thursday

1

Friday

2

Saturday

3

Sunday

4

JUNE						
S	M	T	W	T	F	S
				1	2	3
4	5	6	7	8	9	10
11	12	13	14	15	16	17
18	19	20	21	22	23	24
25	26	27	28	29	30	

June

Monday

5

Tuesday

6

Wednesday

7

2023

Thursday

8

Friday

9

Saturday

10

Sunday

11

JUNE						
S	M	T	W	T	F	S
				1	2	3
4	5	6	7	8	9	10
11	12	13	14	15	16	17
18	19	20	21	22	23	24
25	26	27	28	29	30	

June

Monday

12

Tuesday

13

Wednesday

14

2023

Thursday

15

Friday

16

Saturday

17

Sunday

18

JUNE						
S	M	T	W	T	F	S
				1	2	3
4	5	6	7	8	9	10
11	12	13	14	15	16	17
18	19	20	21	22	23	24
25	26	27	28	29	30	

June

Monday
19

GSA Council Meeting - 6 pm

Tuesday
20

Wednesday
21

2023

Thursday

22

Friday

23

Saturday

24

Sunday

25

JUNE
S M T W T F S

1 2 3
4 5 6 7 8 9 10
11 12 13 14 15 16 17
18 19 20 21 22 23 24
25 26 27 28 29 30

July

Sun	Mon	Tue	Wed	Thur	Fri	Sat
						1
2	3	4	5	6	7	8
9	10	11	12	13	14	15
16	17	18	19	20	21	22
23	24	25	26	27	28	29
30	31					

2023

NOTES

June/July

Monday

26

Tuesday

27

Wednesday

28

2023

Thursday
29

Friday
30

Saturday
1

Sunday
2

Canada Day -
University Buildings Closed

JULY						
S	M	T	W	T	F	S
						1
2	3	4	5	6	7	8
9	10	11	12	13	14	15
16	17	18	19	20	21	22
23	24	25	26	27	28	29
30	31					

July

Monday
3

Canada Day in lieu of -
University Buildings Closed

Tuesday
4

Wednesday
5

2023

Thursday

6

Friday

7

Saturday

8

Sunday

9

JULY						
S	M	T	W	T	F	S
						1
2	3	4	5	6	7	8
9	10	11	12	13	14	15
16	17	18	19	20	21	22
23	24	25	26	27	28	29
30	31					

July

Monday

10

Tuesday

11

Wednesday

12

2023

Thursday

13

Friday

14

Saturday

15

Sunday

16

JULY						
S	M	T	W	T	F	S
						1
2	3	4	5	6	7	8
9	10	11	12	13	14	15
16	17	18	19	20	21	22
23	24	25	26	27	28	29
30	31					

July

Monday
17

GSA Council Meeting - 6 pm

Tuesday
18

Wednesday
19

2023

Thursday

20

Friday

21

Saturday

22

Sunday

23

JULY						
S	M	T	W	T	F	S
						1
2	3	4	5	6	7	8
9	10	11	12	13	14	15
16	17	18	19	20	21	22
23	24	25	26	27	28	29
30	31					

July

Monday

24

Tuesday

25

Wednesday

26

2023

Thursday

27

Friday

28

Saturday

29

Sunday

30

JULY						
S	M	T	W	T	F	S
						1
2	3	4	5	6	7	8
9	10	11	12	13	14	15
16	17	18	19	20	21	22
23	24	25	26	27	28	29
30	31					

August

Sun	Mon	Tue	Wed	Thur	Fri	Sat
		1	2	3	4	5
6	7	8	9	10	11	12
13	14	15	16	17	18	19
20	21	22	23	24	25	26
27	28	29	30	31		

2023

NOTES

July/August

Monday

31

Tuesday

1

Wednesday

2

2023

Thursday

3

Friday

4

Saturday

5

Sunday

6

AUGUST						
S	M	T	W	T	F	S
		1	2	3	4	5
6	7	8	9	10	11	12
13	14	15	16	17	18	19
20	21	22	23	24	25	26
27	28	29	30	31		

August

Monday

7

Heritage Day - University Buildings Closed

Tuesday

8

Wednesday

9

2023

Thursday

10

Friday

11

Saturday

12

Sunday

13

AUGUST						
S	M	T	W	T	F	S
		1	2	3	4	5
6	7	8	9	10	11	12
13	14	15	16	17	18	19
20	21	22	23	24	25	26
27	28	29	30	31		

August

Monday

14

Tuesday

15

Wednesday

16

2023

Thursday

17

Friday

18

Saturday

19

Sunday

20

AUGUST						
S	M	T	W	T	F	S
		1	2	3	4	5
6	7	8	9	10	11	12
13	14	15	16	17	18	19
20	21	22	23	24	25	26
27	28	29	30	31		

August

Monday

21

GSA Council Meeting - 6 pm

Tuesday

22

Wednesday

23

2023

Thursday

24

Friday

25

Saturday

26

Sunday

27

AUGUST						
S	M	T	W	T	F	S
		1	2	3	4	5
6	7	8	9	10	11	12
13	14	15	16	17	18	19
20	21	22	23	24	25	26
27	28	29	30	31		

August

Monday

28

Tuesday

29

Wednesday

30

NOTES

September

Sun	Mon	Tue	Wed	Thur	Fri	Sat
					1	2
3	4	5	6	7	8	9
10	11	12	13	14	15	16
17	18	19	20	21	22	23
24	25	26	27	28	29	30

2023

NOTES

NOTES

The GSA also communicates important information including GSA dates and deadlines, changes to services, committee vacancies, elections, and other announcements via Facebook, Twitter, Instagram, and our newsletter listserv. All graduate students are included on this listserv unless they choose to unsubscribe. If you have unsubscribed and wish to receive the newsletter again, please email gsa.communications@ualberta.ca to be added.

JANUARY 2022

S	M	T	W	T	F	S
						1
2	3	4	5	6	7	8
9	10	11	12	13	14	15
16	17	18	19	20	21	22
23	24	25	26	27	28	29
30	31					

FEBRUARY 2022

S	M	T	W	T	F	S
		1	2	3	4	5
6	7	8	9	10	11	12
13	14	15	16	17	18	19
20	21	22	23	24	25	26
27	28					

MARCH 2022

S	M	T	W	T	F	S
		1	2	3	4	5
6	7	8	9	10	11	12
13	14	15	16	17	18	19
20	21	22	23	24	25	26
27	28	29	30	31		

APRIL 2022

S	M	T	W	T	F	S
					1	2
3	4	5	6	7	8	9
10	11	12	13	14	15	16
17	18	19	20	21	22	23
24	25	26	27	28	29	30

MAY 2022

S	M	T	W	T	F	S
1	2	3	4	5	6	7
8	9	10	11	12	13	14
15	16	17	18	19	20	21
22	23	24	25	26	27	28
29	30	31				

JUNE 2022

S	M	T	W	T	F	S
			1	2	3	4
5	6	7	8	9	10	11
12	13	14	15	16	17	18
19	20	21	22	23	24	25
26	27	28	29	30		

JULY 2022

S	M	T	W	T	F	S
					1	2
3	4	5	6	7	8	9
10	11	12	13	14	15	16
17	18	19	20	21	22	23
24	25	26	27	28	29	30
31						

AUGUST 2022

S	M	T	W	T	F	S
		1	2	3	4	5
6	7	8	9	10	11	12
13	14	15	16	17	18	19
20	21	22	23	24	25	26
27	28	29	30	31		

SEPTEMBER 2022

S	M	T	W	T	F	S
					1	2
					3	
4	5	6	7	8	9	10
11	12	13	14	15	16	17
18	19	20	21	22	23	24
25	26	27	28	29	30	

OCTOBER 2022

S	M	T	W	T	F	S
						1
2	3	4	5	6	7	8
9	10	11	12	13	14	15
16	17	18	19	20	21	22
23	24	25	26	27	28	29
30	31					

NOVEMBER 2022

S	M	T	W	T	F	S
		1	2	3	4	5
6	7	8	9	10	11	12
13	14	15	16	17	18	19
20	21	22	23	24	25	26
27	28	29	30			

DECEMBER 2022

S	M	T	W	T	F	S
					1	2
					3	
4	5	6	7	8	9	10
11	12	13	14	15	16	17
18	19	20	21	22	23	24
25	26	27	28	29	30	31

2022

JANUARY 2023						
S	M	T	W	T	F	S
1	2	3	4	5	6	7
8	9	10	11	12	13	14
15	16	17	18	19	20	21
22	23	24	25	26	27	28
29	30	31				

FEBRUARY 2023						
S	M	T	W	T	F	S
				1	2	3
				4	5	6
7	8	9	10	11	12	13
14	15	16	17	18	19	20
21	22	23	24	25	26	27
28						

MARCH 2023						
S	M	T	W	T	F	S
				1	2	3
				4	5	6
7	8	9	10	11	12	13
14	15	16	17	18	19	20
21	22	23	24	25	26	27
28	29	30	31			

APRIL 2023						
S	M	T	W	T	F	S
						1
2	3	4	5	6	7	8
9	10	11	12	13	14	15
16	17	18	19	20	21	22
23	24	25	26	27	28	29
30						

MAY 2023						
S	M	T	W	T	F	S
	1	2	3	4	5	6
7	8	9	10	11	12	13
14	15	16	17	18	19	20
21	22	23	24	25	26	27
28	29	30	31			

JUNE 2023						
S	M	T	W	T	F	S
				1	2	3
4	5	6	7	8	9	10
11	12	13	14	15	16	17
18	19	20	21	22	23	24
25	26	27	28	29	30	

JULY 2023						
S	M	T	W	T	F	S
						1
2	3	4	5	6	7	8
9	10	11	12	13	14	15
16	17	18	19	20	21	22
23	24	25	26	27	28	29
30	31					

AUGUST 2023						
S	M	T	W	T	F	S
		1	2	3	4	5
6	7	8	9	10	11	12
13	14	15	16	17	18	19
20	21	22	23	24	25	26
27	28	29	30	31		

SEPTEMBER 2023						
S	M	T	W	T	F	S
					1	2
3	4	5	6	7	8	9
10	11	12	13	14	15	16
17	18	19	20	21	22	23
24	25	26	27	28	29	30

OCTOBER 2023						
S	M	T	W	T	F	S
1	2	3	4	5	6	7
8	9	10	11	12	13	14
15	16	17	18	19	20	21
22	23	24	25	26	27	28
29	30	31				

NOVEMBER 2023						
S	M	T	W	T	F	S
			1	2	3	4
5	6	7	8	9	10	11
12	13	14	15	16	17	18
19	20	21	22	23	24	25
26	27	28	29	30		

DECEMBER 2023						
S	M	T	W	T	F	S
					1	2
3	4	5	6	7	8	9
10	11	12	13	14	15	16
17	18	19	20	21	22	23
24	25	26	27	28	29	30
31						

2023

GSA Health & Dental Plan



The Graduate Students' Association
of the University of Alberta

Make the most out of it

A Health & Dental Plan designed to meet your needs!



Health



Dental



Vision



Travel

For complete details on coverage, the Plan, eligibility, and group numbers, visit www.studentcare.ca.

Save more money!



By consulting a Studentcare Network professional, you can get additional coverage.

* Please note that at the time of printing, benefits and dates for 2022-2023 were still subject to change. For complete details, visit www.studentcare.ca.



Questions?
www.studentcare.ca

Scan the QR code
for more details on
your Plan.





The Faculty of Graduate Studies and Research supports every aspect of your graduate student experience from admissions to convocation:

- Admissions
- Scholarships
- Program Progression Advice
- Professional Development
- Ethics and Academic Integrity

If you have questions about your graduate program here's how to reach us:

Email: grad.mail@ualberta.ca

Virtual counter: ualberta.ca/graduate-studies: weekdays from 1:30 - 3:30PM

In person: 2-29 Triffo Hall: weekdays from 8:30 AM - 12 PM, 1 - 4 PM