

Longitudinal Clinical Experience Tips & Tricks



DISCUSS EXPECTATIONS

Take initiative to talk about the preceptor's expectations and yours. If you have specific goals communicate them!



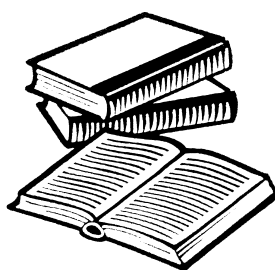
PRACTICE THOSE SKILLS!

You are not expected to be an expert, but view LCE as an opportunity to practice and refine your physical exam skills.



CONNECT YOUR LEARNING TO CLASS CONTENT!

Take advantage of what you're learning in class. If you are comfortable, be open to sharing ideas about patients.



BE CURIOUS!

Ask questions, be willing to learn, and take note of skills/concepts you want to look up after.



EVERY EXPERIENCE IS DIFFERENT!

Preceptors have unique styles. Take note of positive preceptor skills that you would like to incorporate in your practice and what you might do differently as a future physician.

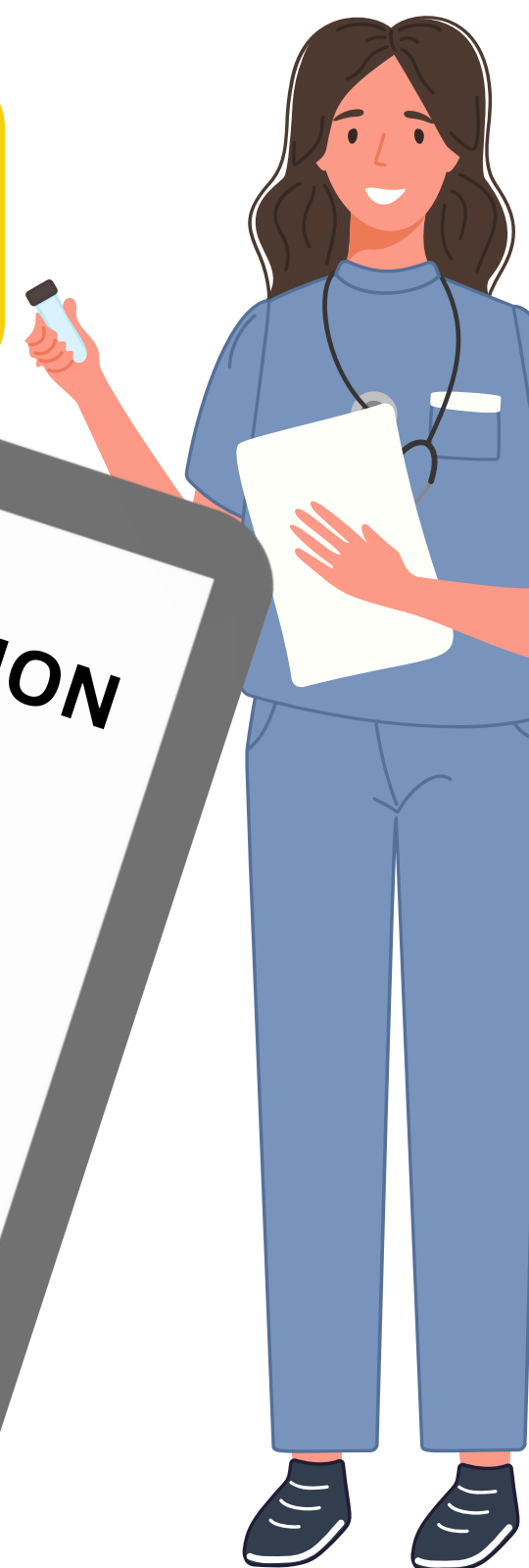


YOU CAN ALWAYS SHADOW MORE!

LCE experiences will vary based on preceptors and locations and that is normal. If you want different experiences, seek out shadowing in your areas of interest.



If you have concerns reach to OAW (oawadmin@ualberta.ca), LCE Coordinator, or peer support to discuss, they are there to support you.



HISTORY & CASE PRESENTATIONS

