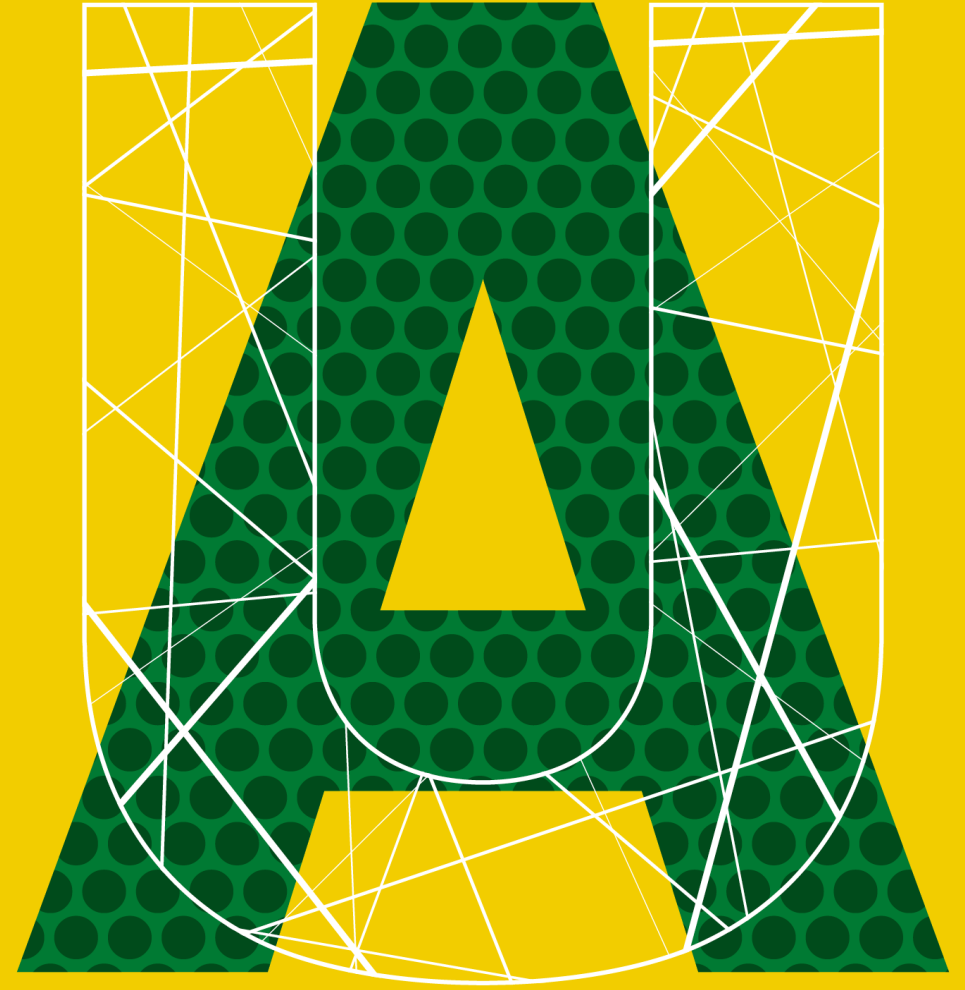


CORE RESEARCH FACILITIES AT THE UNIVERSITY OF ALBERTA



UNIVERSITY
OF ALBERTA

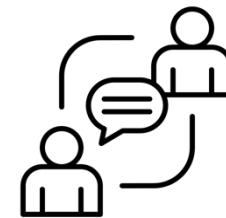


What is a Core Facility?

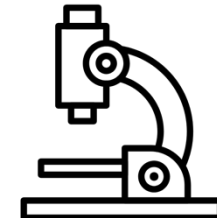
- Centralized, shared research resource
- Provide fee-based access to instrumentation, technology and/or services
 - Generally too expensive, complex or specialized to be sustainable by individual investigators
- Supports basic and translational research

Why Use A Core Facility?

- Access to advanced infrastructure at a reasonable cost
 - Highly subsidized
- Staff provide expert consultation and technical help
- Provide training and education
- Enhance scientific interaction and collaborations
- Promote higher level experimentation



Expert Consultation
& Support



Infrastructure
Access & Services



Training &
Education

University of Alberta Core Facilities

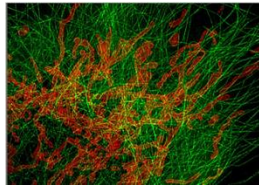
- Analytical Facilities
- Flow Cytometry Facilities
- Genomics and Molecular Biology Facilities
- Histology and Pathology Facilities
- Microscopy Facilities
- Magnetic Resonance Facilities
- Mass Spectrometry Facilities
- Preclinical Facilities
- Spectroscopic Facilities
- Specialized Facilities

FoMD Core Research Facilities

The FoMD Office of Research administers 7 core facilities:



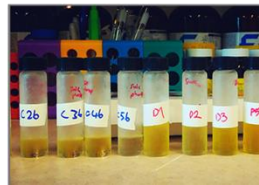
Advanced Cell
Exploration Core



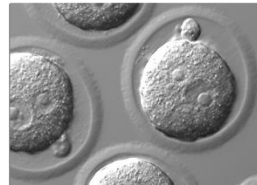
Cell Imaging
Core (Katz)



Flow Cytometry
Facility



Lipidomics Core



Transgenic Core
Facility



Workshop



Autoclave Repair
Core

Access infrastructure or request services:

- Create a MedID/PPMS-Stratocore account ([Instructions](#))
- Training requirements in the [Cell Imaging Core](#) and [Flow Cytometry Facility](#).
- Note: The Cross Cancer Cell Imaging Facility also uses PPMS-Stratocore.

Many resources available in FoMD and the U of A to support your research.

<https://www.ualberta.ca/medicine/research/corefacilities>

Looking for shared equipment or resources?

Colleen Sunderland

colleen.sunderland@ualberta.ca

780-492-0715