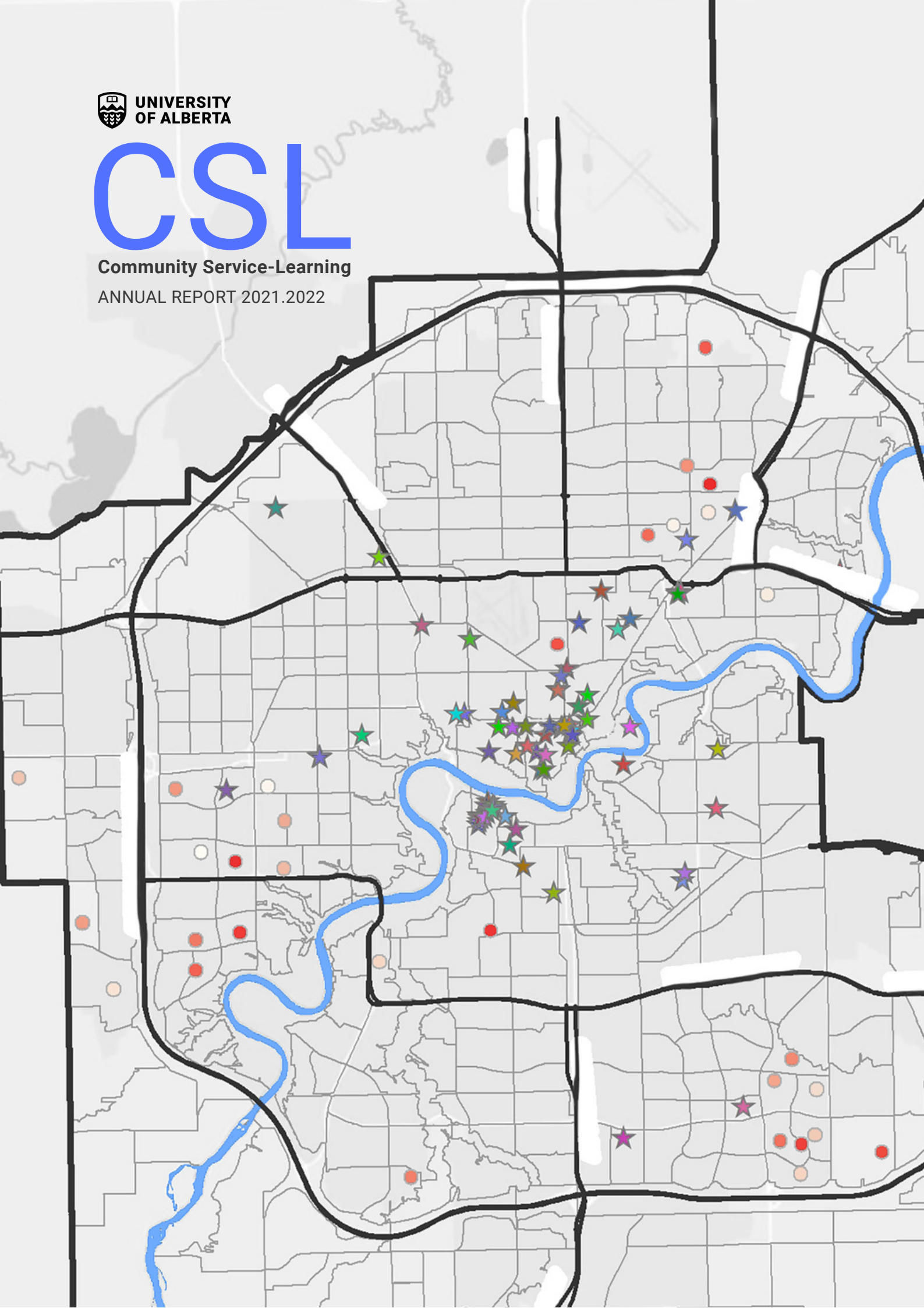




CSL

Community Service-Learning

ANNUAL REPORT 2021.2022



COMMUNITY SERVICE-LEARNING

CSL MISSION

Community Service-Learning (CSL) fosters reciprocal relationships amongst UAlberta instructors and staff, community partners and learners to create opportunities for their reflective participation in socially responsive, community engaged learning and research activities.

CSL VISION

CSL is recognized in Canadian higher education, at UAlberta and by the Edmonton community as a program that brokers knowledge for social impact and positive social change. With support from public and private partners, and by linking together community organizations, learners, academic instructors and researchers, CSL deepens student learning and generates social innovation to address complex social problems.

CSL VALUES

Indigenous ways of knowing and being: recognizing we are situated in Amiskwacîwâskahikan on Treaty 6 territory, the territory of the Papaschase, and the homeland of the Métis Nation

Dialogical learning: integrating in-class and community based learning experiences

Community knowledges: valuing community members and partners as knowledgeable, skilled and actively making positive social change

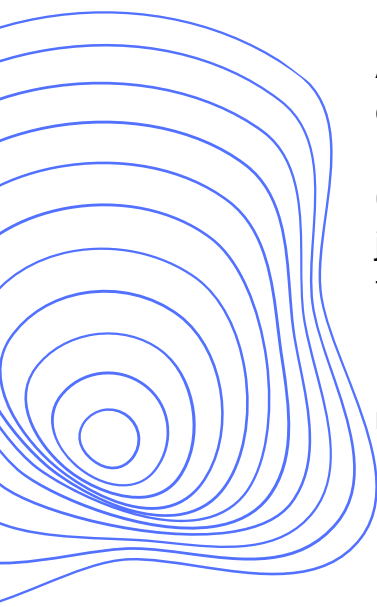
Collaboration: bridging institutional boundaries to connect people and partners

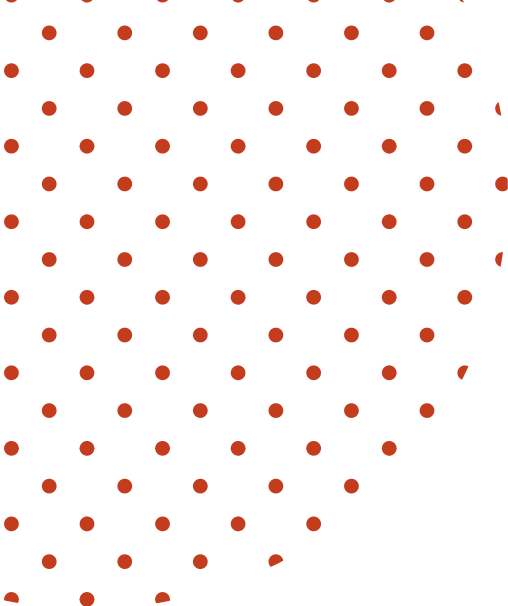
Social inclusion and social justice: creating socially inclusive learning spaces on campus and in community, accessible to a diversity of learners

Arts-based and arts-informed approaches: generating and communicating community engaged learning and research outcomes

Global citizenship: community partners, university instructors and staff jointly co-educating students to positively contribute to communities, from the local to the global

Innovative teaching and research: opening up our courses and research to community wisdom and aspirations

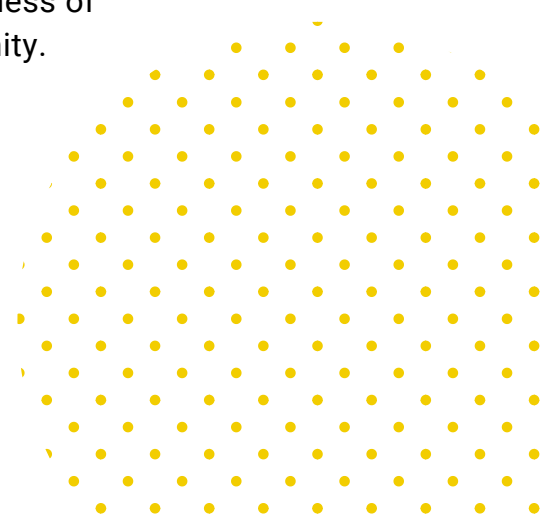




1-2	DIRECTOR'S MESSAGE
3-5	EVALUATION
6-8	COMMUNITY PARTNERS
9-11	STUDENTS
12	INSTRUCTORS
13-14	COURSES
15-17	HUMANITIES 101
18	EVENTS
19-20	KNOWLEDGE MOBILIZATION
21	THANK YOU
22	PEOPLE

TABLE OF CONTENTS

Community Service-Learning (CSL) helps students to build real-life connections between their education and everyday issues in the Edmonton community. Through 20 hour hands-on placements with local non-profit organizations, students are offered an opportunity to gain valuable experience and to contribute and increase their awareness of the social and political life of their community.



MESSAGE FROM THE DIRECTOR



CSL has worked hard this past year through the on again, off again, COVID-inflected terms. From all accounts, including from my son in his first year at UAlberta, the winter term was particularly difficult. Nonetheless, these pages demonstrate the resilience of all of our partners. Around 1500 students participated this year in learning that stretches beyond the classroom to encompass community sites and organizations, as well as project-based CSL taking place online.

For the first time we have mapped our extensive reach across Amiskwacîwâskahican/Edmonton, plotting our community partners in the city and region and giving you an indication of where our projects occur. CSL creates new spaces of learning, joining together the city and the campus classroom in projects of mutual benefit. Behind each and every placement or project lies a carefully calibrated matching of academic learning objectives with community designed projects and volunteer tasks. Our partnership coordinators are the centre of this work, bridging 'town and gown' and enabling our academics to open out their courses for public goods. A special thank you to CSL's graduate research assistant, Oscar Baron-Ruiz, for this GIS mapping.

CSL has completed a cycle of its planning, and the mission, vision and values noted here steered us well through 2018-2022. The pandemic has made all strategic planning seem full of hubris. Yet as we move to the end of this phase of CSL work, I'm confident in saying that we have consistently delivered that to which we have aspired, despite the difficulties. That is a shared accomplishment of all of our community partners, academics, staff, students and Advisory Board.

MESSAGE FROM THE DIRECTOR

CSL remains a compelling and academically oriented form of experiential learning in Canadian higher education. We look forward to finding new ways to serve our communities, academics and learners in this post-pandemic era. As our university restructures and undergoes its own transformations, we trust that CSL will continue to strengthen higher education and our city.

As always, a special thanks to our donors, including the Muehlenfeld Family Foundation, the Boardwalk Charitable Foundation, Edmonton Community Foundation, and our scholarship and bursary endowments from Dr. Troy and Mrs. Karen Basarab and the late Lynn Morgan. We dearly appreciate the support in a time of uncertainty and restructuring at our university.



Dr. David Peacock, Ph.D.

DIRECTOR, CSL

EVALUATION

Evaluations are carried out at the end of each term. Here is a snapshot of the impact of CSL from this past year.

Visit uab.ca/CSL for more details.

1495
STUDENTS

182
COMMUNITY
PARTNERS

47
INSTRUCTORS



100%

OF INSTRUCTORS INDICATED
THAT CSL CONTRIBUTED TO
STUDENTS' LEARNING

93%

OF STUDENTS INDICATED
THAT CSL IS AN EFFECTIVE
TEACHING/LEARNING
STRATEGY

94%

OF COMMUNITY PARTNERS
INDICATED THAT THE
PROJECT CONTRIBUTED TO
STUDENTS' LEARNING

97%

OF INSTRUCTORS INDICATED
THAT CSL ENHANCED THE
LEARNING ENVIRONMENT

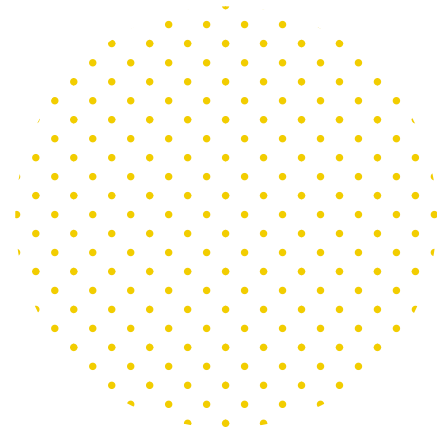
87%

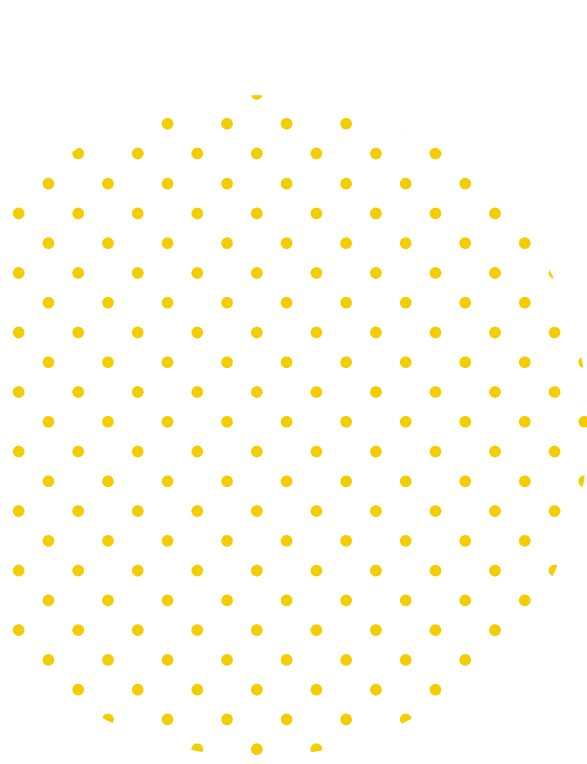
OF STUDENTS WOULD
RECOMMEND CSL TO PEERS



90%

OF COMMUNITY PARTNERS
INDICATED THAT CSL
HELPED STUDENTS
UNDERSTAND SOME OF THE
COMPLEXITIES OF SOCIAL
ISSUES





**“I GAINED A WIDER
UNDERSTANDING OF
SOCIAL JUSTICE
ISSUES AND HISTORY
OF PROBLEMS THAT I
DIDN'T PREVIOUSLY
KNOW ABOUT.”**

**“MORE
ENGAGED
CITIZENS.”**



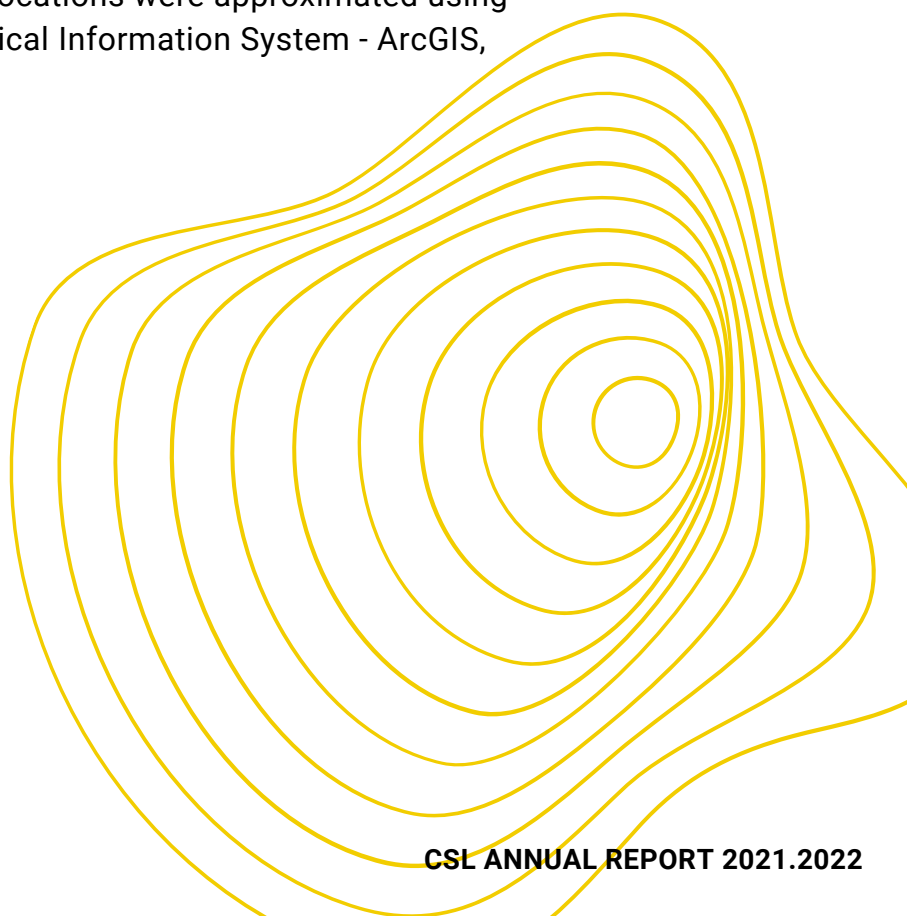
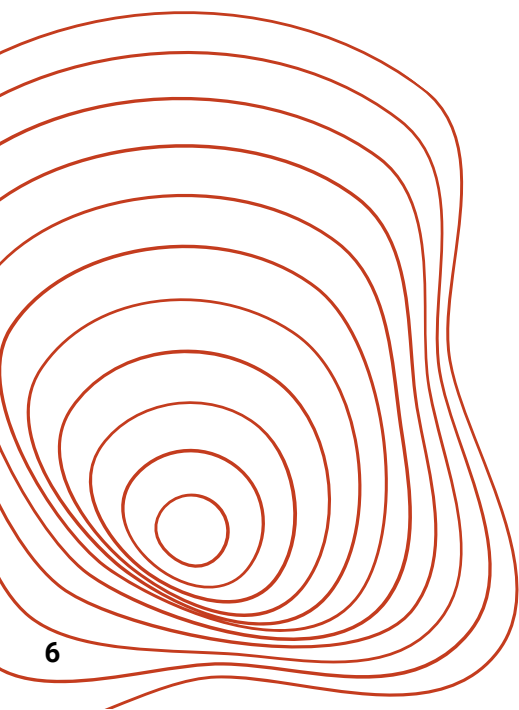
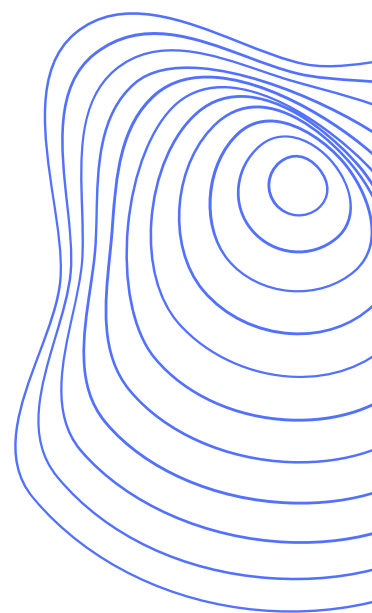
**“THANK YOU FOR
DOING SUCH AN
AMAZING JOB
CONNECTING
STUDENTS WITH
COMMUNITY
PARTNERS.”**

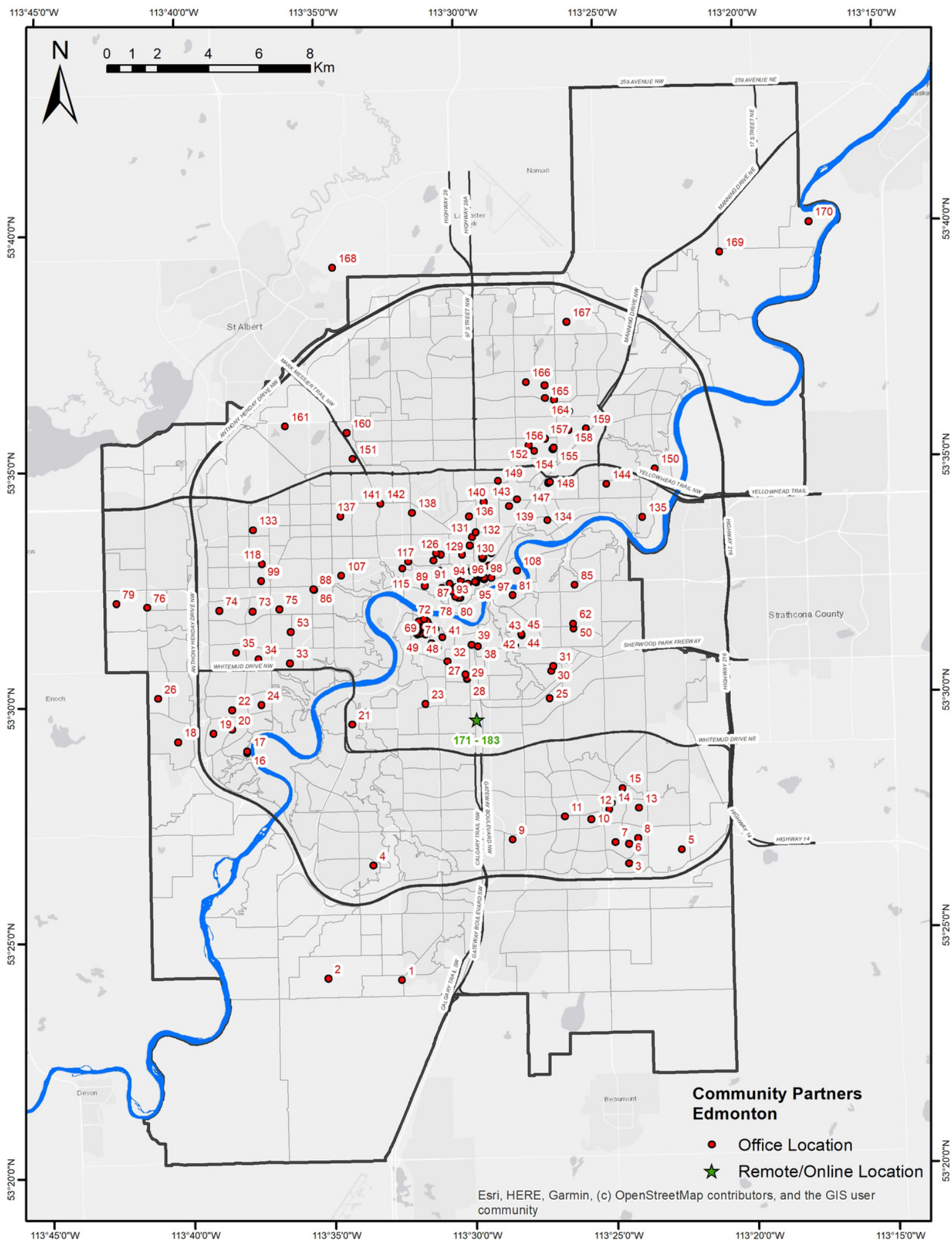
COMMUNITY PARTNERS

Since 2003, CSL has partnered with over 200 community organizations of all types and sizes in and around Edmonton, from small grassroots groups to large non-profit organizations. Community partners are vital to the functioning of CSL.

They co-educate students in community issues and increase public awareness of key social issues.

Prepared by Oscar Baron Ruiz, a PhD student in Engineering and CSL's Graduate Research Assistant, the map on the following page depicts the location of 183 community partners and schools located in the City of Edmonton and its surrounds. These are places where many students developed their CSL projects over the past academic year (in both Fall and Winter, some CSL students worked on group projects online). They also locate the site of the Humanities 101 communities with which we partner. The numbers on the map correspond to the names on the adjacent page. The numbers locate the Edmonton Public Schools students were placed at. Locations were approximated using the postal codes and the Geographical Information System - ArcGIS, version 10.5.1.





No.	Map Symbol	Organization
1	•	Dr. Anne Anderson School
2	•	Donald R. Getty School
3	•	Crawford Plains School
4	•	Nellie Carlson School
5	•	Svend Hansen School
6	•	T. D. Baker Junior High School
7	•	Pollard Meadows School
8	•	Daly Grove School
9	•	Kemet Advanced Manufacturing
10	•	Mill Woods Seniors' Association (MWSA)
11	•	Holy Trinity High School
12	•	Weinlos School
13	•	Bisset School
14	•	Kate Chegwin School
15	•	Minchau School
16	•	Beaver Hills Biosphere
17	•	Land Stewardship Centre
18	•	Bessie Nichols School
19	•	Michael A. Kostek School
20	•	S. Bruce Smith School
21	•	Brookside School
22	•	Ormsby School
23	•	Tevie Miller Heritage School
24	•	Talmud Torah School
25	•	W. P. Wagner High School
26	•	Kim Hung School
27	•	Horizon Community League
28	•	Edmonton Federation of Community Leagues (EFCL)
29	•	Strathcona High School
30	•	Avonmore Community League
31	•	Metro Continuing Education
32	•	Strathcona Place Society
33	•	Hillcrest School
34	•	Thorncliffe School
35	•	Aldergrove School
36	•	Gradual Rising of Women (GROW)
37	•	Youth Empowerment and Support Services (YESS)
38	•	AdaptAbilities
39	•	Old Strathcona Youth Society (OSYS)
40	•	Sisters' Dialogue
41	•	Garneau University Early Learning Centre
42	•	Comité FrancoQueer de l'Ouest (CFQO)
43	•	Radio Cité
44	•	CANAVUA
45	•	L'UniThéâtre
46	•	UAlberta Golden Bears & Pandas Athletics
47	•	Institute for Sexual Minority Studies and Services (ISMSS)
48	•	Connecting Seniors with Care UAlberta
49	•	The Steadward Centre for Personal & Physical Achievement
50	•	Kenilworth School
51	•	Campus & Community Recreation - University of Alberta
52	•	Sexual Assault Voices of Edmonton (SAVE)
53	•	Jasper Place School
54	•	TeamUP Science
55	•	University of Alberta
56	•	Converse and Cook
57	•	Seniors with Skills (SWS) UAlberta
58	•	CJSR Campus Radio
59	•	Campus Food Bank
60	•	Faculty of Native Studies
61	•	UAlberta Libraries - Rutherford Library
62	•	Frontier College
63	•	Alberta Public Interest Research Group (APIRG)
64	•	UAlberta Energy Management and Sustainable Operations (EMSO)
65	•	Experiential Learning & Programming (Faculty of Arts & Science)
66	•	USchool
67	•	University of Alberta School of Business
68	•	Indigenous Business Students Association
69	•	University of Alberta Facilities and Operations
70	•	University of Alberta Marketing Association (UAMA)
71	•	FrancoFriends
72	•	UAlberta Sustainability Council
73	•	West Edmonton Seniors Activity Centre (WESAC)
74	•	LaPerle School
75	•	Alex Janvier School
76	•	Winterburn School
77	•	Braided Journeys
78	•	Alberta Children's Services
79	•	David Thomas King School
80	•	Government of Alberta
81	•	Bennett Centre
82	•	Alberta Digital Innovation Office
83	•	Youth Restorative Action Project (YRAP)
84	•	Edmonton Seniors Centre
85	•	Argyll Centre
86	•	The Learning Centre Literacy Association (TLCLA)
87	•	Alberta Health Services
88	•	Migrante Alberta
89	•	Jewish Senior Citizen's Centre (JDIC)
90	•	Alberta Council of Women's Shelters
91	•	Zebra Child Protection Centre

No.	Map Symbol	Organization
92	•	Ribbon rouge
93	•	Volunteer Alberta
94	•	Edmonton 2 Spirit Society
95	•	Rupertslund Institute
96	•	Citadel Foote Theatre School
97	•	Kindred House
98	•	The Citadel
99	•	Action on Smoking and Health (ASH)
100	•	Radio CBC
101	•	Tetra Society of North America - Edmonton Chapter
102	•	Elizabeth Fry Society (EFry)
103	•	Cerebral Palsy Association in Alberta (CPA)
104	•	Winston Churchill Square
105	•	Sage Seniors Association
106	•	Art Gallery of Alberta
107	•	Father Involvement Network Edmonton & Region (FINER)
108	•	Boys and Girls Clubs Bigs Students' Association (BGCBigS)
109	•	Edmonton Food Council
110	•	City of Edmonton
111	•	City of Edmonton - Accessibility Services
112	•	Edmonton Mennonite Centre for Newcomers (EMCN)
113	•	City of Edmonton - Citizen Services
114	•	Solar Alberta
115	•	Skills Society
116	•	Edmonton Police Services
117	•	Council of Canadians
118	•	Indigenous Knowledge and Wisdom Centre (IKWC)
119	•	The Mustard Seed Society
120	•	Shan Shan Bakery
121	•	Chinatown Transformation Collaborative Society of Edmonton (CTCYEG)
122	•	King Noodle House Pho Hoang
123	•	Black Owned Market
124	•	CIVIDA
125	•	Operation Friendship Seniors' Society (OFSS)
126	•	Edmonton Immigrant Services Association (EISA)
127	•	Lucky 97
128	•	Multicultural Health Brokers (MCHB)
129	•	Edmonton Public Schools (EPSB) - Academic Learning Support Program
130	•	Centre for Global Education (CGE)
131	•	Voice of Albertans with Disabilities (VAD)
132	•	HIV Edmonton
133	•	Edmonton Institution for Women
134	•	Bellevue Community League
135	•	Beverly Daycare Society & FRC
136	•	Spruce Avenue School
137	•	Chef's Association
138	•	YEG Food Resource Hub
139	•	Bent Arrow
140	•	Canadian Native Friendship Centre (CNFC)
141	•	Basketball Alberta
142	•	Alberta Recreation and Park Association
143	•	Catholic Social Services (CSS)
144	•	Beacon Heights School
145	•	ElderCare Edmonton
146	•	ABC Head Start Society
147	•	Christmas Bureau
148	•	Community Options
149	•	Start2Finish
150	•	Free Play for Kids
151	•	GRIT
152	•	Balwin Belvedere Revitalization Team
153	•	Sinkunia Community Development Organization
154	•	Africa Centre
155	•	Sihle-Sizwe Vineyard Foundation
156	•	Princeton School
157	•	Balwin School
158	•	Belvedere School
159	•	Somali Canadian Women and Children Association (SCWCA)
160	•	Chrysalis-An Alberta Society for Citizens with Disabilities
161	•	Edmonton Humane Society
162	•	York School
163	•	M.E. LaZerte High School
164	•	Londonderry School
165	•	John Barnett School
166	•	J.A. Fife School
167	•	Soraya Hafez School
168	•	Poundmaker's Lodge
169	•	Horse Hill School
170	•	Lady Flower Gardens
171	★	Alberta Esports Association
172	★	Equality Fitness & Recreation
173	★	Faro Gardens
174	★	Indigenous Climate Justice
175	★	La Connexional
176	★	NSTEP
177	★	PALcares
178	★	Pesticide Free Edmonton
179	★	Shrubscriber
180	★	Skillcity Institute
181	★	Women's Legal Education and Action Fund (LEAF Edmonton)
182	★	YEG Seniors
183	★	Zero Waste Edmonton

CSL EQUITY AWARD

In Fall 2021, CSL supported 50 equity deserving students with a \$1000 award.



"The award came at a time I needed it financially because of COVID especially. When I heard about the Equity Award and saw it targeted marginalized populations, I was hopeful to see that they were thought about. It really felt like CSL was telling you that you mattered." LAETARE KAGISYE

AWARDS

EMILY AUGER - Lynn Morgan Community Service-Learning Scholarship

ESTHER IP - Community Service-Learning (CSL) Award

ZACKARY PENDDAH - A Basarab Family Scholarship for Community Service-Learning

CERTIFICATE

The Certificate in Community Engagement + Service-Learning demonstrates that students have integrated over 100 hours in community into their post-secondary education. Congratulations to all of the students who achieved their certificate in 2021-2022!

- ALISHA IZABELLA BACHEZ
- LEAH ANABEL BERGER
- KIANA ALEASE CHOUINARD
- AMANDA HUAN HUYNH DE BOER
- KATRINA BERNARDO ELEAZAR
- JESSICA REIKO FRANKIEWICZ
- SIMRAN GREWAL
- ALLY MEDINA HAMDON
- MAISSIE HILLMAN
- SAADA LEE HUSSEIN
- AVANIDEEP KAUR LADHAR
- AUTUMN PAIGE LANG
- TÉA MEGAN LEWIS
- MADALYN KATHERINE MANDZIUK
- HABEEBAH MANDZIUK
- ABENA MILLER
- BREANNA CARLY PALMER
- VIBHATI TANDON
- CHRISTINE VIDENA
- HARSHIL N VYAS

NPBI

The Non-Profit Board Internship (NPBI) program provides UAlberta graduate + undergraduate students the opportunity to learn a variety of practices and skills required for serving on the boards of community-based non-profit organizations. This past year 24 community-engaged interns received mentorship from over 24 community board volunteers.

SARA ASSAF
MACKENZIE BOESSENKOOL
SYDNEY CANTU
ERIC CHAN
DOROTHY EIMAN
FEA GELVEZON
TRU HAMILTON
NAWREEN HENA
SAADA HUSSEIN
MARIJKE KALISVAART
YAGMUR KARAGOL DEMIR
YKA LLANES
HAILEY LOTHAMER
KATHRYN MACDONALD
LARISSA MITCHELL
JAE MOSHER
KATE MULLIN
TOBORE ONOOKOME-OKOME
JANMEJAY RAO
NICOLE ANNE MARIE RODRIGUEZ
NIUSHA SAFARPOUR
VENKATA SAI SATHVIK VISWANADHA
MEGAN WANG
JIAMING ZHANG



"Being able to meet and communicate with board members and other interns has provided a lot of great insight into fields where I had previously shallow knowledge and helped me consider alternative approaches to certain challenges I had not considered before." NAWREEN HENA

PATHWAYS

Pathways is a journey through the non-profit sector that allows students to experience and reflect on a rich + varied set of experiences with Edmonton community organizations. Pathways is generously funded by the Edmonton Community Foundation.



ISHAN ARORA - FOOTE THEATRE SCHOOL (CITADEL)

"I am passionate about working with and around people. Working with kids is something that keeps me happy and reminds me of all the good that's out there. CSL gave me the opportunity to schedule, host and organize theatre and drama camps for students ranging from elementary to high school kids."



PHOEBE CHIN - ALBERTA COUNCIL OF WOMEN'S SHELTERS

"I have always felt strongly about wanting to help create a more equitable society and the CSL program has allowed me to work alongside organizations with the same passions to develop my professional, communication, and collaborative skills. Being outside of the comfort zone is where most growth occurs, and the CSL program has offered me just that!"



CHARVI DHAMIJA - RIBBON ROUGE FOUNDATION

"I am an international student from India, doing BSc Specialization in Computer Science. As a newcomer to Canada, I wanted to learn more about the communities around me. CSL has given me the perfect learning opportunity to gain a diverse set of experiences by working with different organizations in Edmonton."



RUBY LALL - EDMONTON STREET PERFORMERS FESTIVAL

"The CSL experience has given me doorways to expand my knowledge, skills, and confidence. Meeting like minded individuals along the way are what I truly believe builds strong community connection. Being in this position has allowed my creative side to flow, which I am very grateful for. I am thrilled to see where the next chapter of CSL pathways takes me."



MEAGHAN SYCH - SOLAR ALBERTA

"I am a mature student who completed my CSL Certificate in my previous undergraduate degree. I am really grateful for this opportunity to continue my CSL work with Solar Alberta this summer, and looking forward to starting an MA in English in Fall 2022."



VIBBY TANDON - PATHWAYS ASSISTANT INTERN

"I believe CSL is a priceless resource for students as it truly bridges the gap between theoretical learning and hands-on learning, allowing individuals the chance to put their knowledge to the test and gain valuable connections in the community at the same time."

INSTRUCTORS

The Faculty of Arts CSL Instructor Teaching Award is presented annually to an Instructor who has employed Community Service-Learning in their courses, in order to encourage and recognize excellence in CSL and community-engaged teaching pedagogies.

Jay Friesen

CSL INSTRUCTOR TEACHING AWARD RECIPIENT



As a student, I was annoying. While well-intentioned, I was always the type to ask, “why do I need to learn this?” and “where am I gonna use this in real life?”.

Now, as an instructor, these questions seem a bit daunting. How am I supposed to know where someone will use what I’m teaching? I know why it matters to me, but I’ve also had the luxury of time, space, and experiences to think about it. However, it’s nearly impossible for me to answer for a student, stepping into someone else’s shoes. People’s individual experiences, motivations, and ways of thinking are too complex for me even to know where to begin.

As an instructor, I can foster a space where students begin to answer these questions for themselves. And to meaningfully answer these sorts of questions, folks need to have experiences to draw from and then comrades to unpack them with. When it’s working, a course moves from individual students to a community of learners.

This is why I teach Community Service-Learning. It reflects the complex ways people learn and use what they have learned outside the classroom. When you create a community of learners inside a classroom, it’s quickly apparent that these relationships extend into the broader community. Jointly, we realize that answering the tough questions can only be done as a community of learners and, more crucially, in the community where ideas transform into impacts.

For instructors, the question of “why do I need to learn this?” starts to answer itself through CSL. And, most importantly, it answers itself by creating a community which not only includes but depends on the expertise and enthusiasm of our incredible community partners. The secret to CSL, they open up space in the community and allow students to envision how they will take what they learn with them after they graduate, which is all I really hope for as an instructor.

COURSES

CSL is integrated into a broad range of courses in many departments and faculties across the UAlberta campus and within CSL-designated courses that allow students to develop their understandings of CSL theory and practice. The following courses ran from Fall 2021 to Summer 2022:

AGRICULTURE, LIFE + ENVIRONMENTAL SCIENCES

AREC 173 Plate, Planet + Society
HECOL 301 Program Planning

ALBERTA SCHOOL OF BUSINESS

MARK 312 Marketing Research
MARK 455/655 Sustainability + Responsible Marketing
MARK 488 Sports Marketing

ARTS

CSL 100 Introduction to Community Service-Learning
CSL 200 Theory + Practice in Community Service-Learning
C LIT 102 World Literature II
FREN 298 Intermediate French II
FREN 459 Translation: English into French
FREN 479 French Comics + Francophone Culture
GSJ 501 Praxis Workshop
LA ST 210 South America
MLCS 210 Approaches to Cultural Studies
PSYCO 323 Infant + Child Development
PSYCO 325 Applied Research in Developmental Psychology
PSYCO 329 Adult Development + Aging
PSYCO 423 Peer Relations in Childhood
SOC 291 Environmental Sociology
SOC 327 Criminal Justice Administration in Canada
WGS 102 Gender + Social Justice
WRS 210 Professional Communication

EDUCATION

EDSE 422/451 Curriculum for Drama Majors II/Theory into Practice
EDSE 613 Participatory Research
EDU 100/300 Contexts of Education

KINESIOLOGY, SPORT + RECREATION

KIN 385 Physical Activity + the Aging Adult
KIN 472 Physical Activity for Individuals with Physical Impairments
KRLS 421 Play Leadership

LAW

LAW 599 Digital Law

MEDICINE + DENTISTRY

D HYG 470 Behavioural Sciences III
FoMD SJ CoSS

NATIVE STUDIES

NS 430 Indigenous Governance + Partnership Capstone
NS 450/550 Practicum in Native Studies

PHARMACY

PHARM 412 Behavioural/Administrative/Social + Evidence-based Pharmacy 5

ST. JOSEPH'S COLLEGE

CHRTC 349 Social Justice + Christianity

SCHOOL OF PUBLIC HEALTH

SPH 504/631 Health Promotion Planning + Evaluation
MACE 496/597 UEval: Evaluation in the Community Context

SCIENCE

CMPUT 401 Software Process + Product Management

HUMANITIES 101

Humanities 101 provides free, accessible, supportive, rigorous, university-level courses for communities both on and off campus who would not otherwise have access to university.



This past year was another humbling reminder that time stops for nothing and no one. Despite the relentless demands of a global pandemic, a university in constant flux, and support organizations stretched thin to meet community needs, our learning community continues to thrive!

Due to a very successful Winter 2021 term we continued our collaboration with UBC to deliver online classes for the limited numbers of Humanities 101 learners who have consistent and secure access to technology and the internet. We had a term of rich learning and discussions exploring a theme inspired by an Octavia Butler (fitting, considering the times) quote: “All that you touch you change. All that you change, changes you”. Each class introduced us to people, ideas, and topics that challenged us to recognize how we are both impacted and impact communities, culture, land, and ideas around us. You can read more about what we learned by checking out the yearbook the UBC Humanities 101 produced, found on their website: (humanities101.arts.ubc.ca)

While we were meeting online with the UBC Humanities 101 class, we were also busy building courses for our big return to campus! Collaborating with the Faculty of Native Studies Indigenous Prison Arts and Education Project and Women and Gender Studies instructor Lana Whiskeyjack we were able to support the scheduling of a Walls to Bridges class, WGS280 Indigenous Women Life Writing and Autobiography, class for a January start. We also had guest speakers and faculty ready to lead two in-person Humanities 101 classes, both focused on unpacking the significance of the mundane in our everyday (our hope was to escape the big headlines that occupy so much of our minds). With everyone struggling to connect during the pandemic we were very eager to learn together in real life. But, as you know, this wasn't going to happen.

Unfortunately, due to the increased pandemic restrictions felt by institutions, we were unable to go into either WINGS or Edmonton Institution For Women for classes.

We decided to continue online with a media class that used video stories to explore the themes of critical race theory, disability studies, and science and technology. During the term Bonita, the Humanities 101 intern, arranged several incredible field trips for us. The first one was a pizza party online with Alexis Hillyard of Stump Kitchen! Alexis led a cooking class that was much more than cooking. She spoke candidly about her experience as a person with a disability and facilitated some amazing discussions.

By the spring we were finally able to get out and about in real life!

First we had an incredible Chinatown tour with Linda Hoang. Linda spent an evening with us, feeding our minds and our bodies with delicious food and incredible conversations centred around anti-Asian hate that is experienced in Edmonton and across the globe. Food is a great entry into conversation and education about racism. As a large and enthusiastic group we wandered the aisles of Lucky 97, sampled some of the amazing treats at Shan Shan Bakery, and shared a delicious meal at King Noodle Pho Hoang!



Then Bonita met the class at the Art Gallery of Alberta for another in-person field trip. It was a great evening of looking, thinking, and talking. The exhibit “Don’t Ask Me Where I Am From” was a great refresher of the many things we had learned throughout the Fall 2021 and Winter 2022 term.

Lastly, thanks again to Bonita’s amazing work, we were able to meet up at The Citadel to enjoy “The Herd” written by Kenneth T. Williams and directed by Tara Beagan. It isn’t a coincidence that the play dovetailed perfectly with the year of learning. We were challenged to think about the relationships among science, culture, and politics - specifically from an Indigenous perspective. It was a great play and we are very grateful for the tickets - thank you to The Citadel!

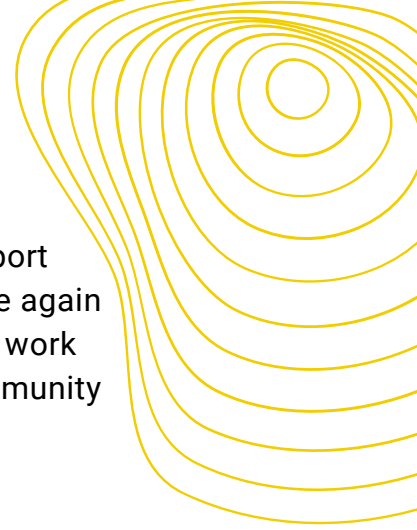
In addition to the campus classes (that were being held off campus) we were able to work closely with the Faculty of Native Studies Indigenous Prison Arts and Education Project to plan and facilitate a correspondence learning course inside Edmonton Institution for Women. When we found out that the Walls to Bridges classes were cancelled due to federal COVID-19 restrictions within penitentiaries, we decided to start up a course that could build on the success of last year’s Humanities 101 radio show. As part of that radio show we had provided printed readings, activities, and materials to participants inside Edmonton Institution for Women (EIFW). These packages were very well received. Using what we learned from building those packages we decided to develop a correspondence course built out of the cancelled Walls to Bridges Indigenous Women Life Writing and Autobiography syllabus.

Working alongside Allison Sivak and Sarah Auger, we put together 16 weeks of packages that included poems, art, essays, articles, activities, and supplies that were dropped off at EIFW every two weeks. Then, we would pick up completed activities, write letters in response to each activity, and drop those letters back off at EIFW. We couldn’t have anticipated the success the course has been. With over 90 participants there have been a lot of letters to write!

It is obvious that there is an ever growing need for many different kinds of adult education courses to meet the many different needs and gifts of the many different people who are excluded from post-secondary institutions. Since COVID, Humanities 101 has offered online courses, radio courses, and correspondence courses - all of which were very “attended” and well received with incredible engagement. Ideally we would like to be able to continue to offer all that and in-person classes because there is a need and want for it all. It is an unfortunate reality that there just aren’t the resources and support needed to be able to meet the learning appetites of communities across this city. That being said, with the support from all of you who continue to contribute your time, knowledge, and material resources we have been able to do a lot with a little. Thank you!

CSLEBRATION

Each year we celebrate all of our stakeholders who support the CSL program. This year our annual CSLebration once again moved online and featured a peek of some the amazing work accomplished by our CSL students, instructors and community partners throughout 2021-2022.



AGATA M.O.
±



PRISCILLA O.
±



MARCUS K.
±



JENNY G., HANNAH G., LAURA J., ROBYN M., SARAH R., BRITTANY O.
±



JORDAN C.
±



MADDI G.
±



LAINE S.
±



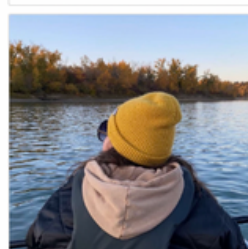
JOANNE L. & DANIEL H.
±



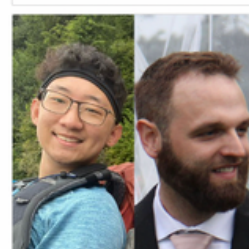
SARA A.
±



ARYAN A.
±



CHRISTIE K.
±



KERRY C. & BRAD C.
±



IRIS H.
±



MONIKA P.
±



CHARVI D.
±



ANN J.
±



REBECCA S.
±



ROZANDRA G.
±



SHEHZAIB K.
±



HUMANITIES 101
±



EUNSEO P.
±



SABRINA S.
±



LAUREN M.
±



VICTORIA G.
±



EUNBI P., NIMRA Q., KAYLA M., & ANIKA K.
±



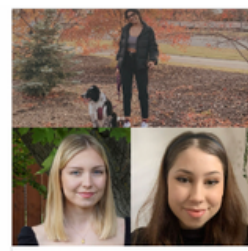
ANNETTE M., TANIN S., AMANDA D.
±



RAMEA R. & CHATHUVI V.
±



MARIE THERESE B.
±



SHAREN ANNA M., SYDNEY D. & ELLA H.
±



VIVIAN L-B.
±

KNOWLEDGE MOBILIZATION

The CSL team works every year to co-generate and share knowledge on CSL and community engagement praxis with many partners.

Anderson, S., Bear, T., Blois, F., Howdle, S., Huel, C., Prins, L., Spencer, B. (2021, October 12). *Heartwork in W2B: A Conversation with Elders on Incarceration and Education*. [live online panel]. As part of Walls to Bridges 10 Year Anniversary Symposium, Kitchener Waterloo, Ontario.

Collins, L., Day, P., Martellino, C., Peacock, D. (2022). *UBC Student Affairs Consultation*. Internal Report.

Friesen, J. (2021-2022). *Community Engagement Professional Credentialing Program*. Reviewer, Campus Compact.

Friesen, J. (2021-2022). *Digital Law and Innovation Society*. Community Advisor, Faculty of Law, University of Alberta.

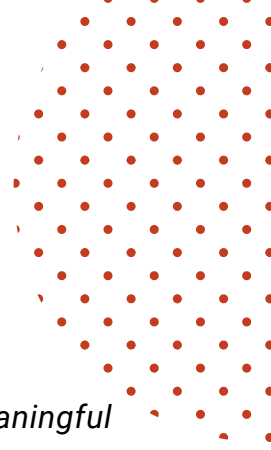
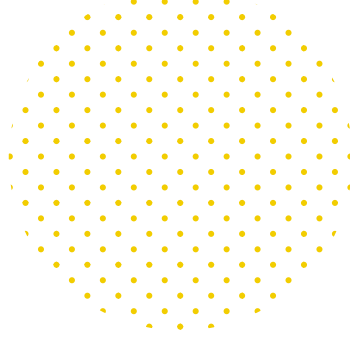
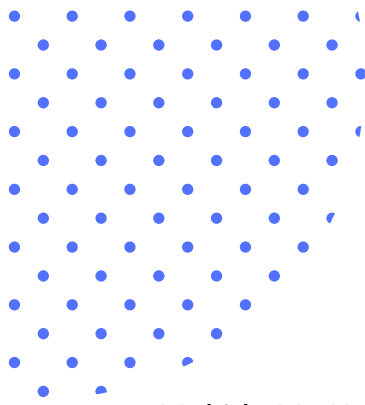
Friesen, J., Slobod, C. (2021-2022). *Foundations in Community Engagement for Graduate Students*. Professional Development Course, University of Alberta.

Kelly, E. (2021, November 16). *Community Service-Learning: A Program, A Pedagogy*. Guest lecture for Aboriginal Teacher Education Program students in EDU 100. University of Alberta.

Kelly, E., Friesen, J., Mukith, M. (2022, March 8). *CSL Community Partner Seminar: Spring Community Connect*. University of Alberta.

Kincaid, K., & Peacock, D. (2022, June 20). *Student Equity Award: A model for supporting students from equity deserving backgrounds and recognizing their impact in the community*. [live online presentation] Annual conference of Co-operative Education and Work-Integrated Learning Canada (CEWIL Canada)

Mukith, M., Friesen, J., Kelly, E. (2022). *CSL virtual coffee house support sessions for community partners*. University of Alberta.



Mukith, M., Kelly, E., Friesen, J., Peacock, D. (2022, November 16). *Building Meaningful Partnerships Workshop: From Beginning to Beginning*. CEWIL Canada.

Mukith, M. (2021-2022). *Voices of CSL*. [podcast]. University of Alberta.
<https://bit.ly/3zmVbJv>

Peacock, D., Thompson, C. J. (2022). The Carnegie Corporation and Philanthropy in Canadian Higher Education: A Case Study on the University of Alberta's Department of Extension. *Journal of Higher Education Outreach and Engagement*, 26(2). XX-XX.

Peacock, D. (in press). *How Community Engaged Learning became 'WIL': The shifting discourses of Canadian Experiential Learning*. In K. Grain, A. Johal & S. Poyntz (Eds.). *Critical Futures: Community Engaged Research in a Time of Crisis and Social Transformation*. University of Toronto Press. (XX-XX).

Peacock, D., Prins, L, (2021, August 26). *CSL pedagogy and Hum 101*. Fall Instructor orientation session. University of Alberta.

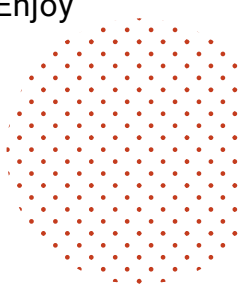
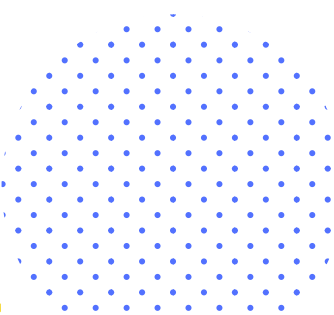
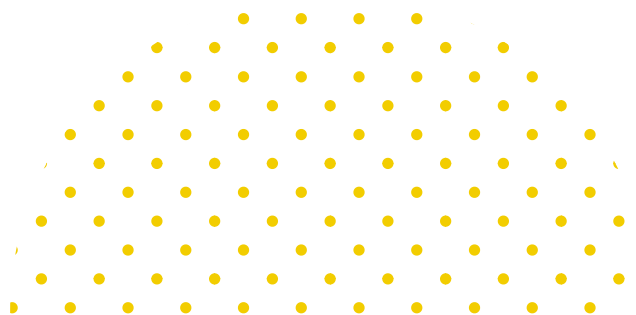
Peacock, D., Link, K. (2021, December 3). *Experiential learning and the not-for-profit sector*. ABNN, VA and CSL workshop, Social Action Lab, Skills Society of Edmonton.

Peacock, D., Friesen, J. (2022, February 16). *Students' CSL projects intellectual property: A just exchange of knowledge and benefits*. Online workshop.
<https://bit.ly/3xda3ss>

Peacock, D., Grossman, S., Esmail, J., Tandon, R., Merrick, A. (2022, May 17). *Practising community engaged learning in the 'WIL' era*. [live online panel]. Congress (CSSHE), Federation of Humanities and Social Sciences.

Peacock, D. (2022, May 27). *How CSL became WIL*. [in person presentation]. Horizons: Crisis and Social Transformation in Community-Engaged Research. Community-Engaged Research Institute, SFU, Vancouver.

Prins, L. & A. Sivak. (2022, February 4). *How to Learn How to Stop Worrying and Enjoy Being Fools*. [live online presentation]. University of Alberta.



THANK YOU

CSL is able to support creative and engaged people and projects because of the generous support of our incredible donors and volunteers.

CSL DONORS

Dr. Troy + Mrs. Karen Basarab
Boardwalk Charitable Foundation
Edmonton Community Foundation
Mr. Herbert Kuehne
Mrs. Elaine E. Kuehne
Lynn Morgan
R. + E. Mühlenfeld Foundation
The Friends of the University of Alberta Society
Ms. Susan J. Wegner

HUM 101 SUPPORTERS

Art Gallery of Alberta	Reuben Jentink
Mathew Arthur	King Noodle Pho Hoang
Kelsi Barkway	Beverly Lemire
Tracy Bear	Naomi McIlwraith
Elder Florence Blois	Mpoe Mogale
Bonita Bohnet	Shan Shan Bakery
Margot Butler	Mannat Sidhu
Citadel Theatre	Shalon Sims
Kendra Cowley	Elder Bonny Spencer
Jay Friesen	Elder's Helper Lynda Spencer
Sharla Funk	Stump Kitchen
Val Gow	Sue-Shane Tsoondo
Heather Hatch	MorningStar Willier
Alexis Hillyard	Paul Woodhouse
Linda Hoang	

PEOPLE

CSL TEAM

Leah Berger, CSL Student Intern Fall 2021

Bonita Bohnet, HUM 101 Intern

Jill Flaman, Program + Communications Coordinator

Jay Friesen, Partnership Coordinator

Saria James-Thomas, CSL Student Intern Winter 2022

Erin Kelly, Senior Partnership Coordinator

Mishma Mukith, Partnership Coordinator

Kathryn Kincaid, Evaluation Coordinator

David Peacock, Director

Lisa Prins, HUM 101 Coordinator

Oscar Javier Baron Ruiz, Graduate Research Assistant

Vibby Tandon, Pathways Assistant Intern

2021|2022 ADVISORY BOARD

Allen Ball

Wendy Hogleund

Anastasia Lim

Blessie Mathew

Ellen Parker

David Peacock

David Prodan

Sandra Robertson

Nancy Van Styvendale

Wanda Whitford

